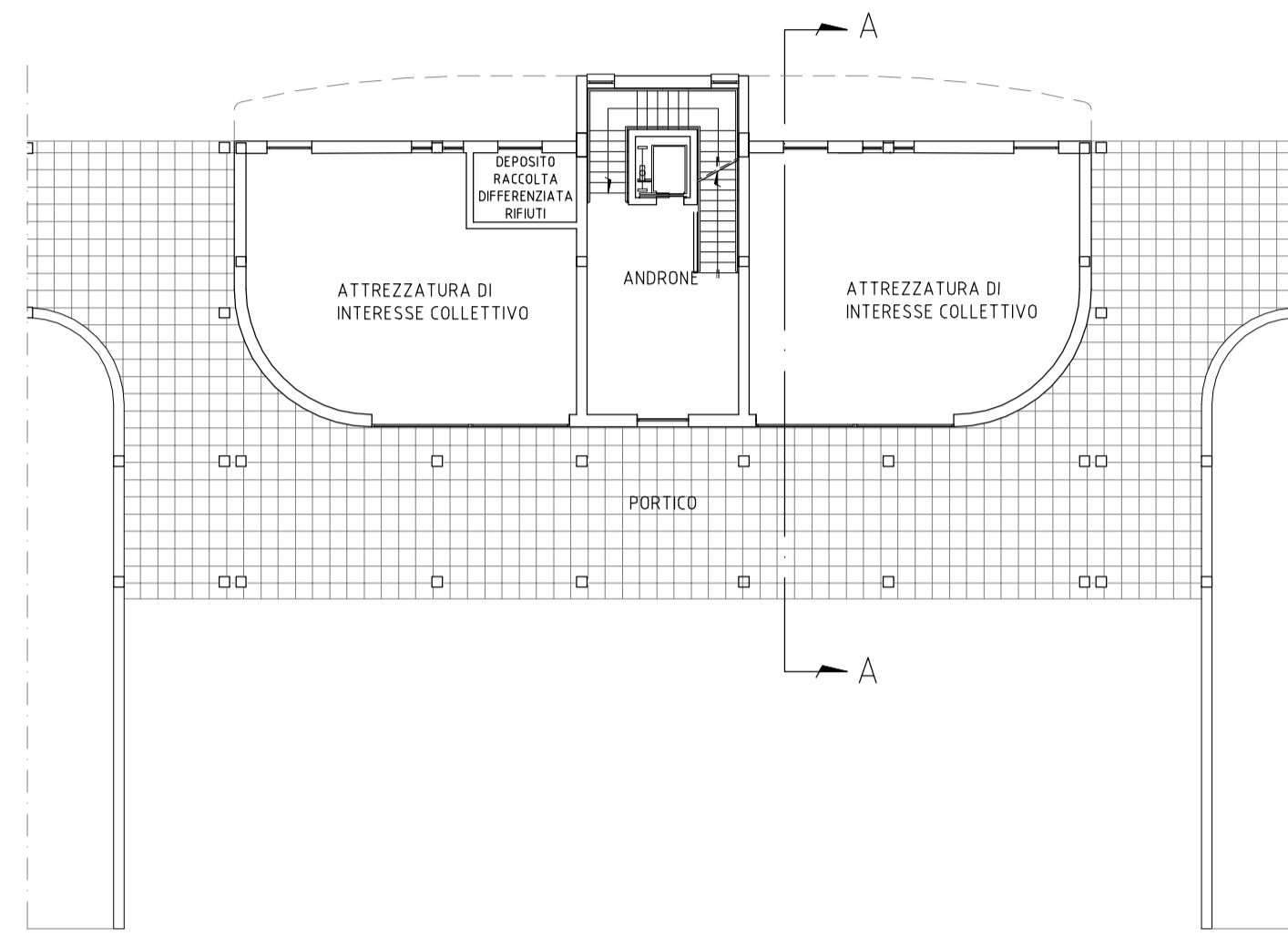
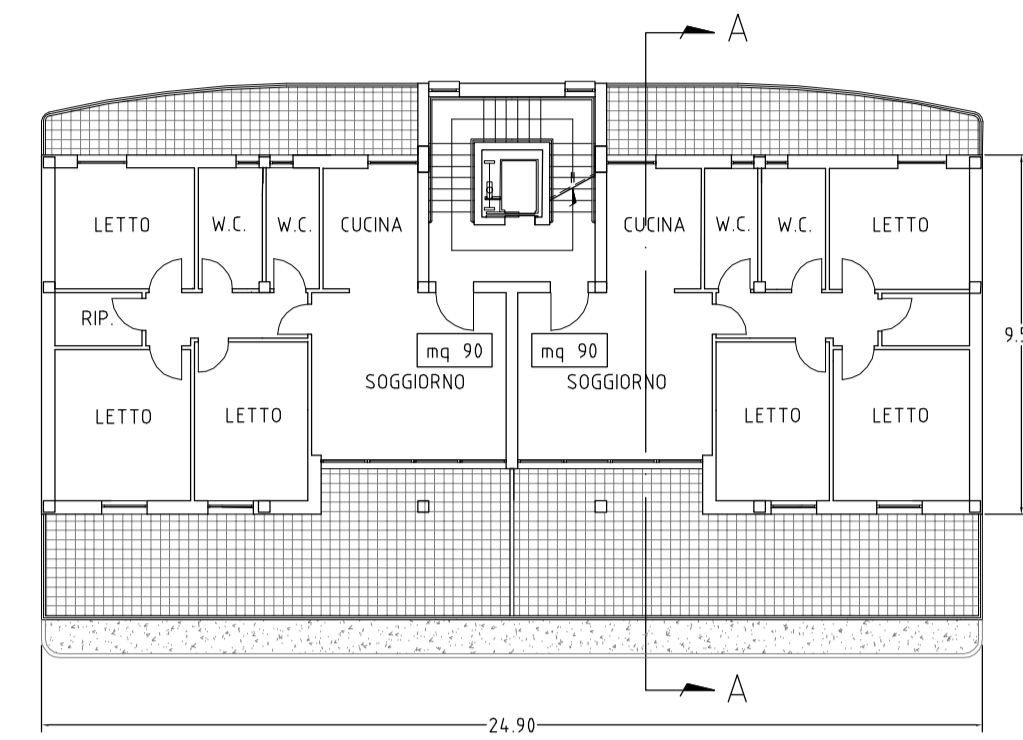


Tipo A	
n. piani	n.4 + PT Porticato
h piani res. + PT	17.50 m
volume lordo	mc 3.985
sis resid.le	mq 994
attrezz. interesse coll.	mq 149
n./s.u. alloggi	
p. tipo	n.2 mq 90
n. totale alloggi	n. 8

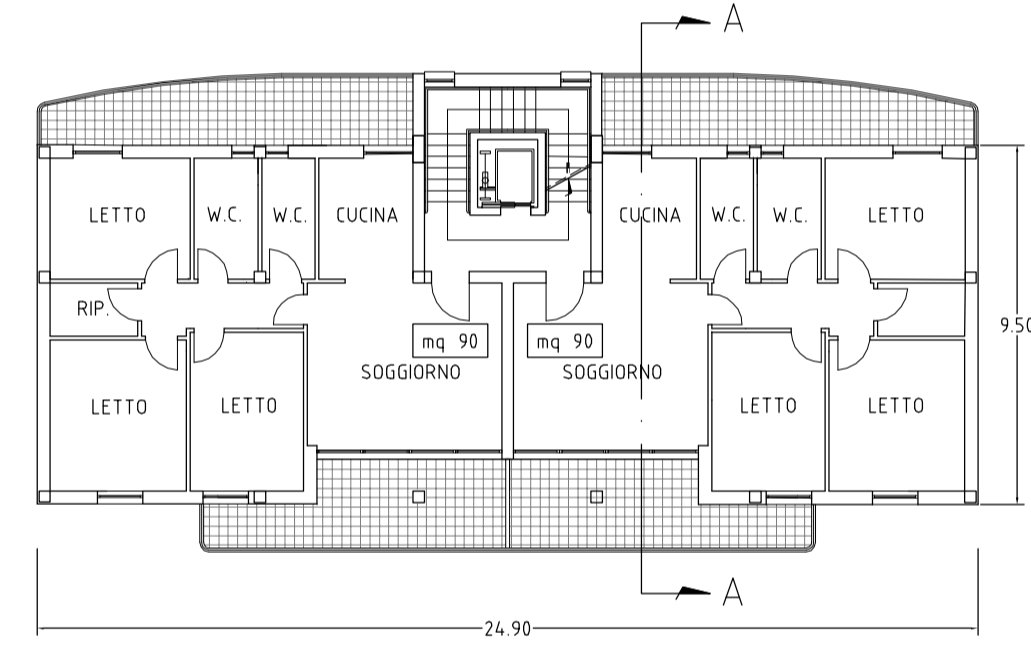
PIANTA PIANO TERRA



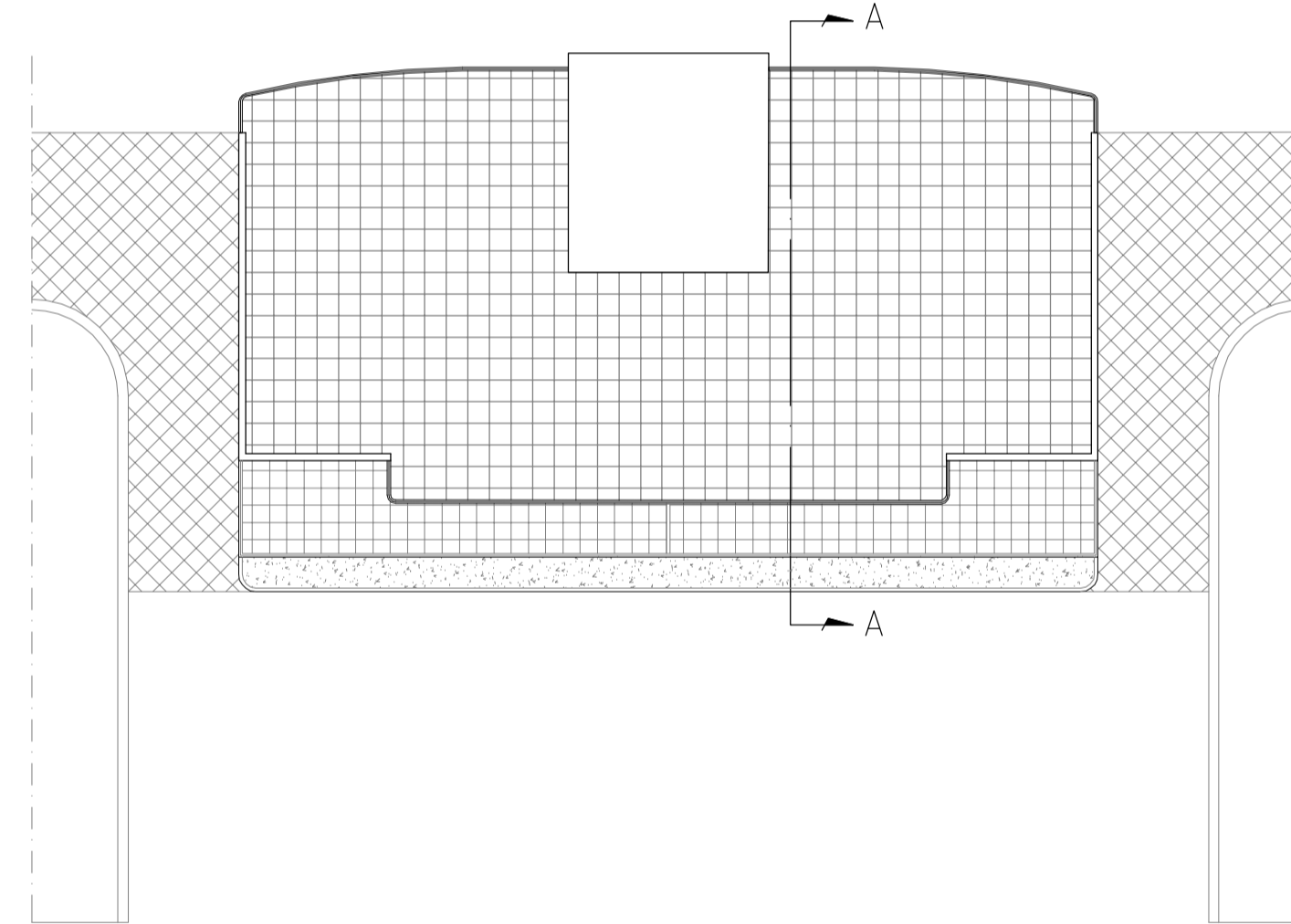
PIANTA PIANO I



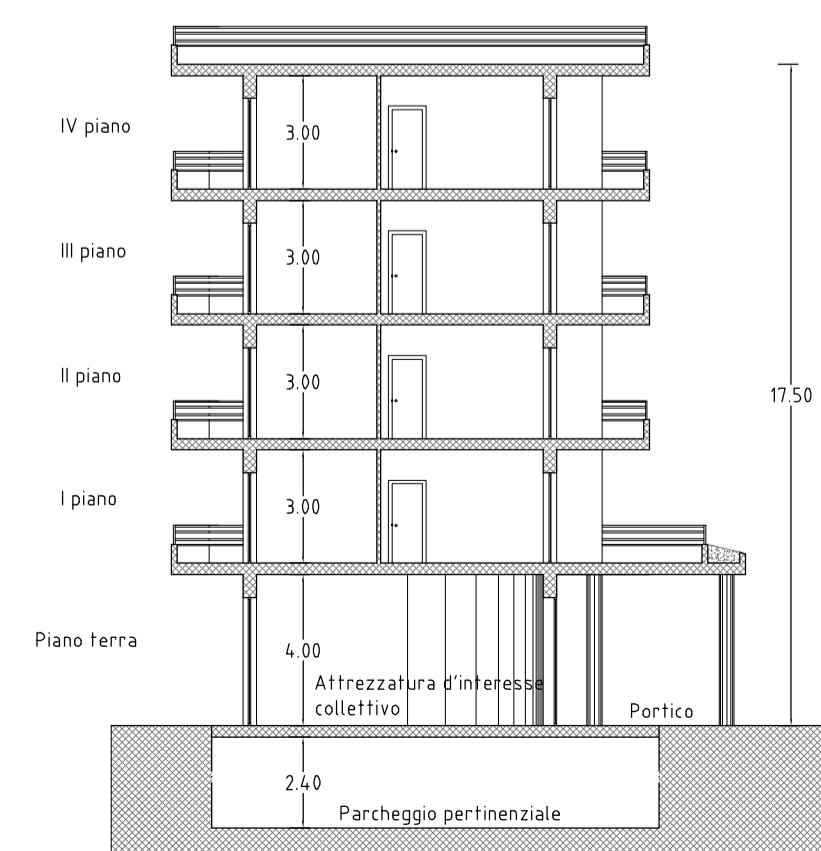
PIANTA PIANO TIPO



PIANTA PIANO COPERTURA

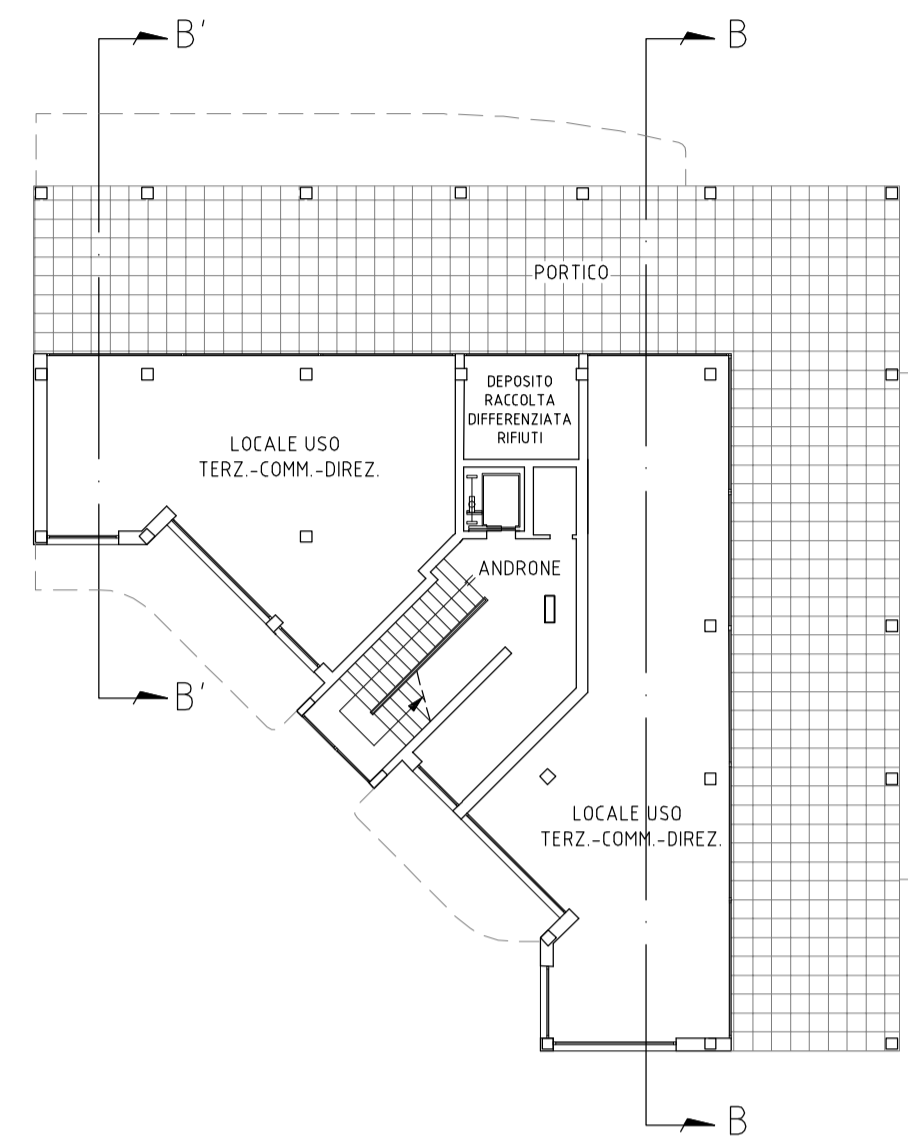


SEZIONE A-A

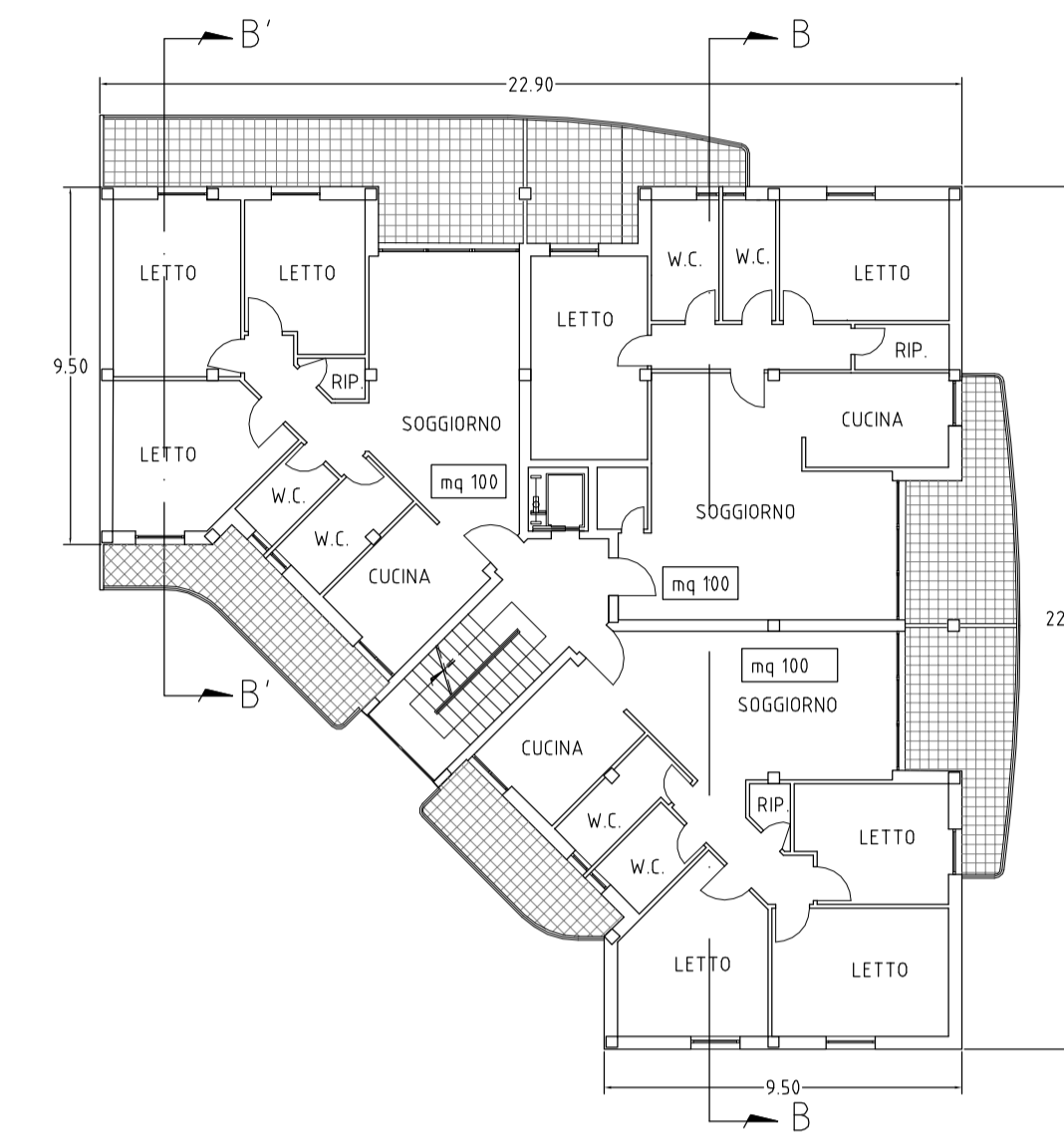


Tipo B	
n. piani	n.4 + PT Porticato
h piani res. + PT	17.50 m
volume lordo	mc 5.072
sis resid.le	mq 1.306
sis terz./comm./direz.	mq 154
n./s.u. alloggi	
p. 1° e 2°	n.3 mq 100
p. 3° e 4°	n.2 mq 100
n. totale alloggi	n. 10

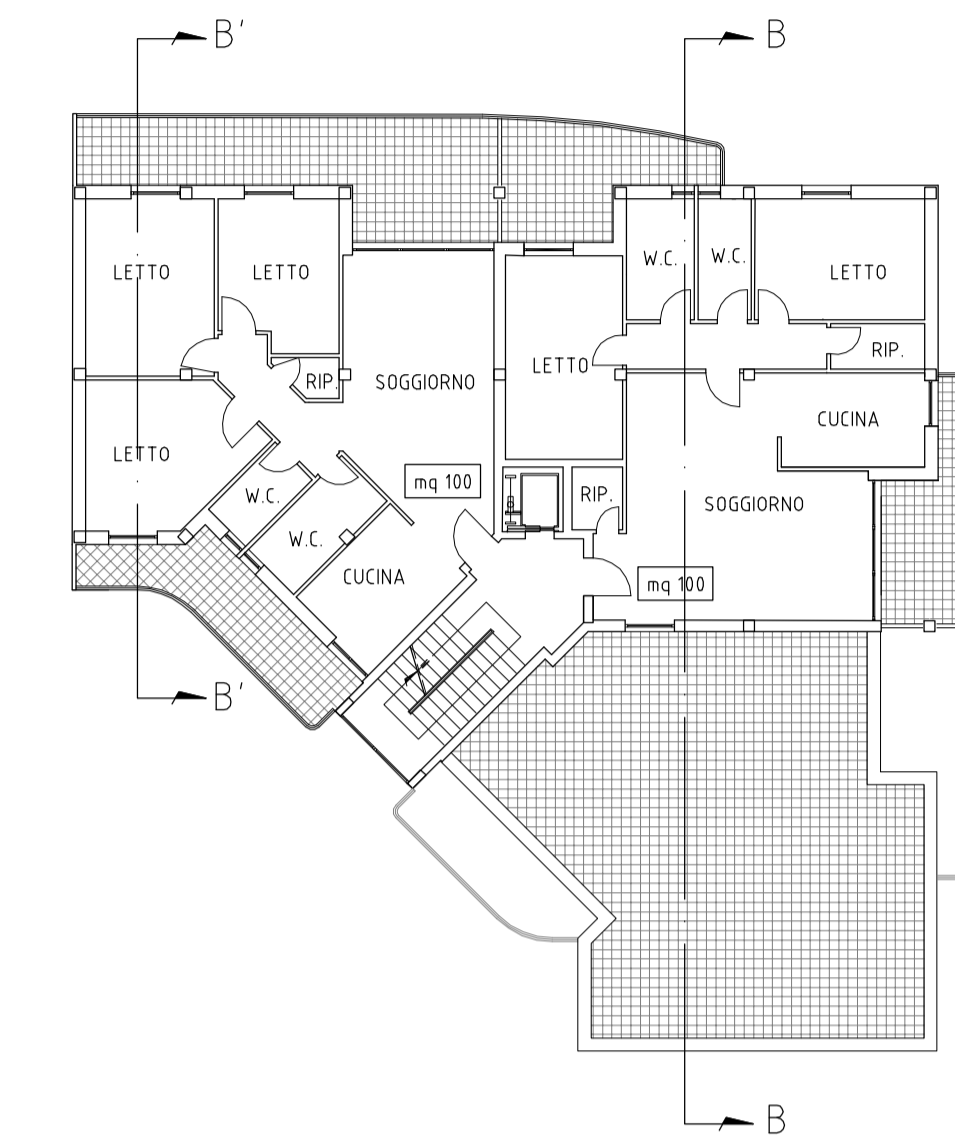
PIANTA PIANO TERRA



PIANTA PIANO I e II



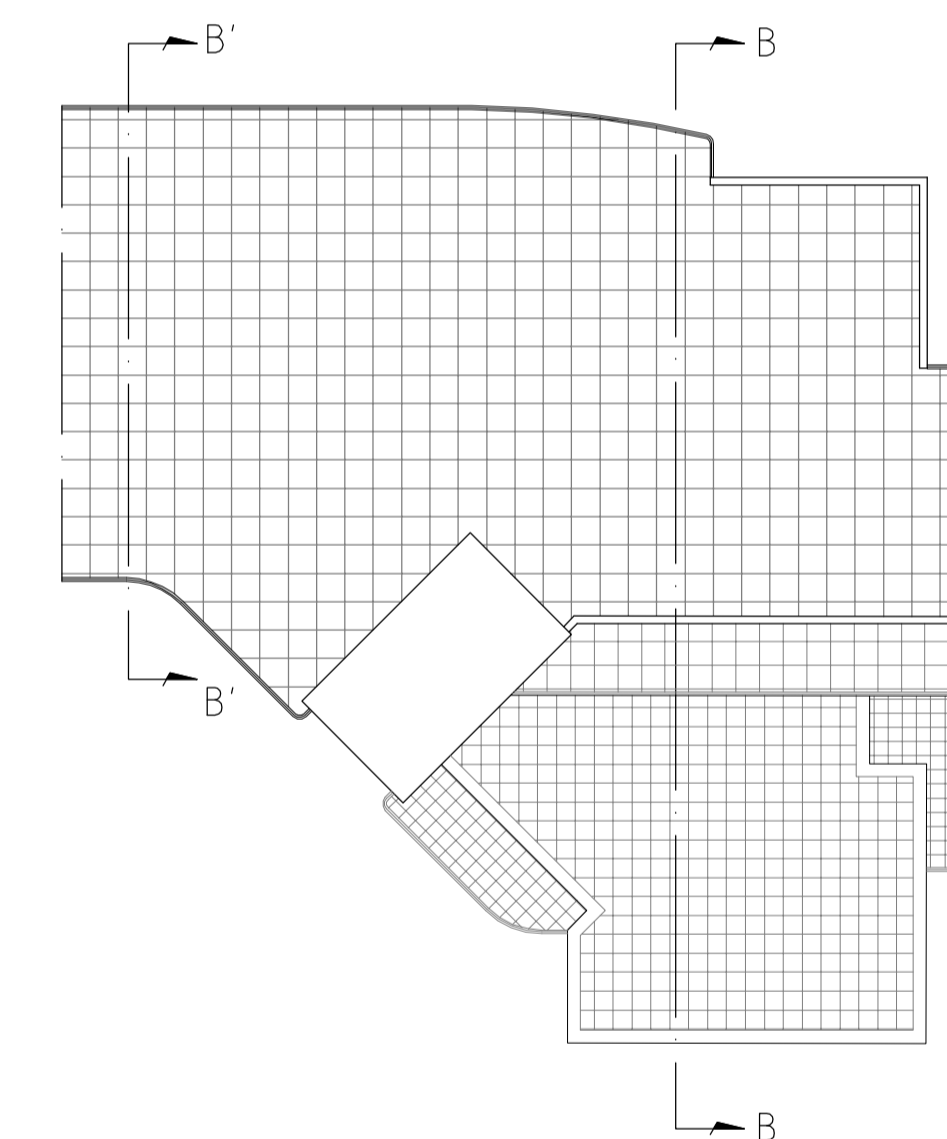
PIANTA PIANO III



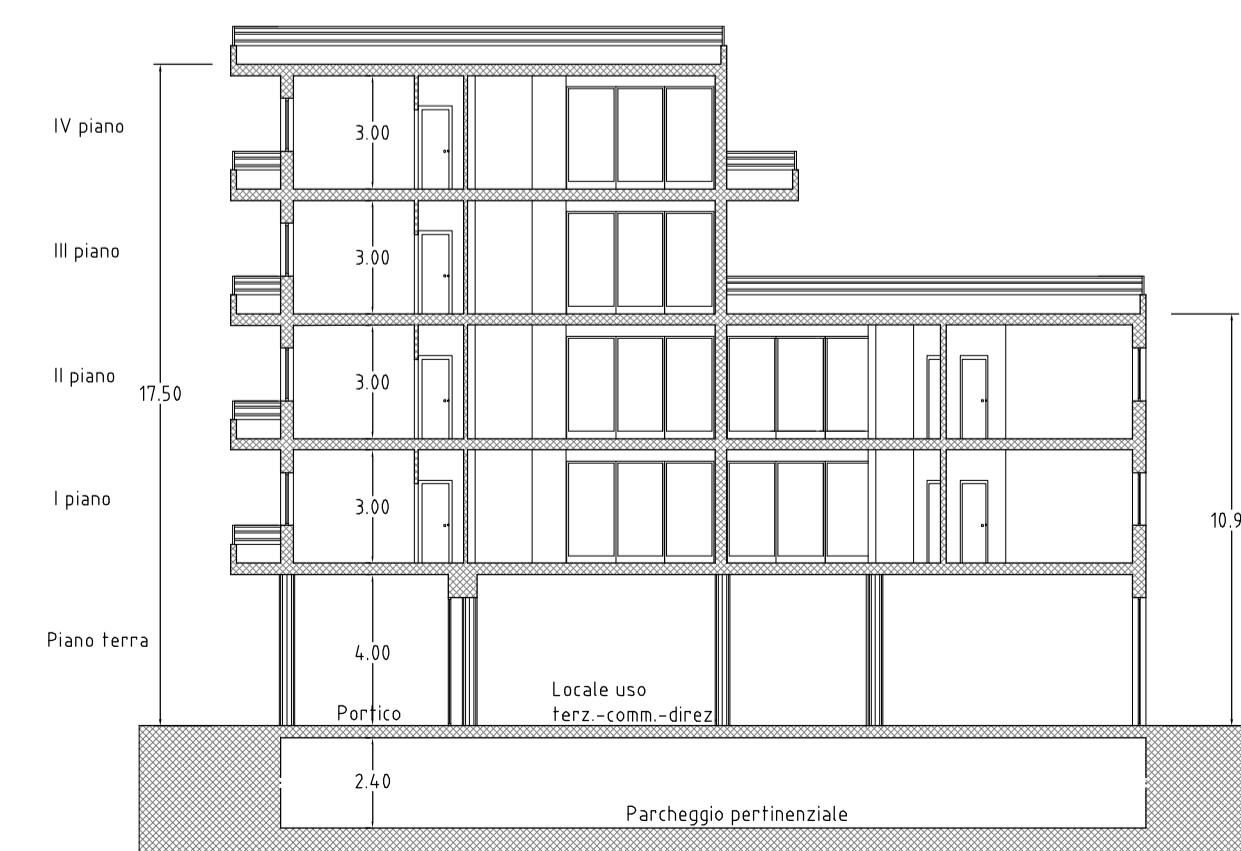
PIANTA PIANO IV



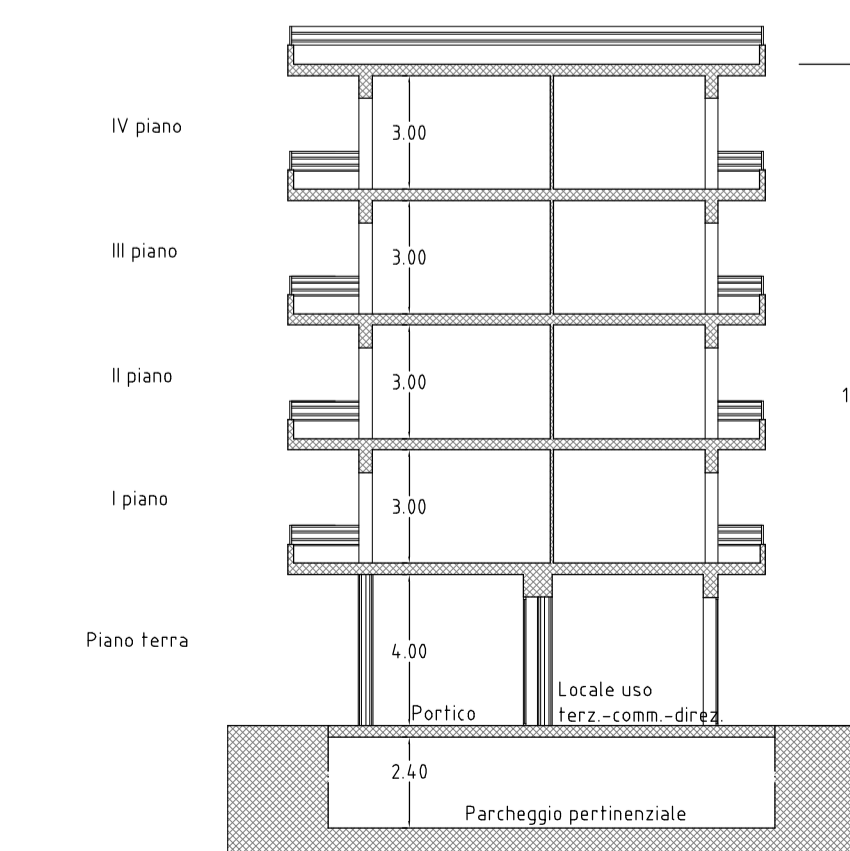
PIANTA PIANO COPERTURA



SEZIONE B-B



SEZIONE B'-B'



TAV. 4 TIPI EDILIZI scala 1 : 200

gruppo di lavoro
COORDINATORE DELLA PROGETTAZIONE
 Arch. Bianca De Roberto

PROGETTAZIONE URBANISTICA
 Arch. Giovanni Ciotta
 Arch. Filomena Darais

PROGETTAZIONE IMPIANTI
 Ing. Vito Galdersi
 Ing. Nicola Grimaldi
 Ing. Benedetto Troisi

PROCEDURE TECNICHE-AMMINISTRATIVE
 Arch. Francesco Savino
 Arch. Mariarosa Ferro
 Geom. Vincenzo de Sio

STUDIO GEOLOGICO
 Geol. Rosario Lambiase

COLLABORATORI
 Geom. Marcello Sansone
 Geom. Corrado Marino
 Geom. Gaetana Pinto

STUDIO FONOMETRICO
 Dott. Anna Lisa Spatola
 Arch. Daniela De Martino

IL DIRETTORE DI SETTORE
 Arch. Bianca De Roberto