

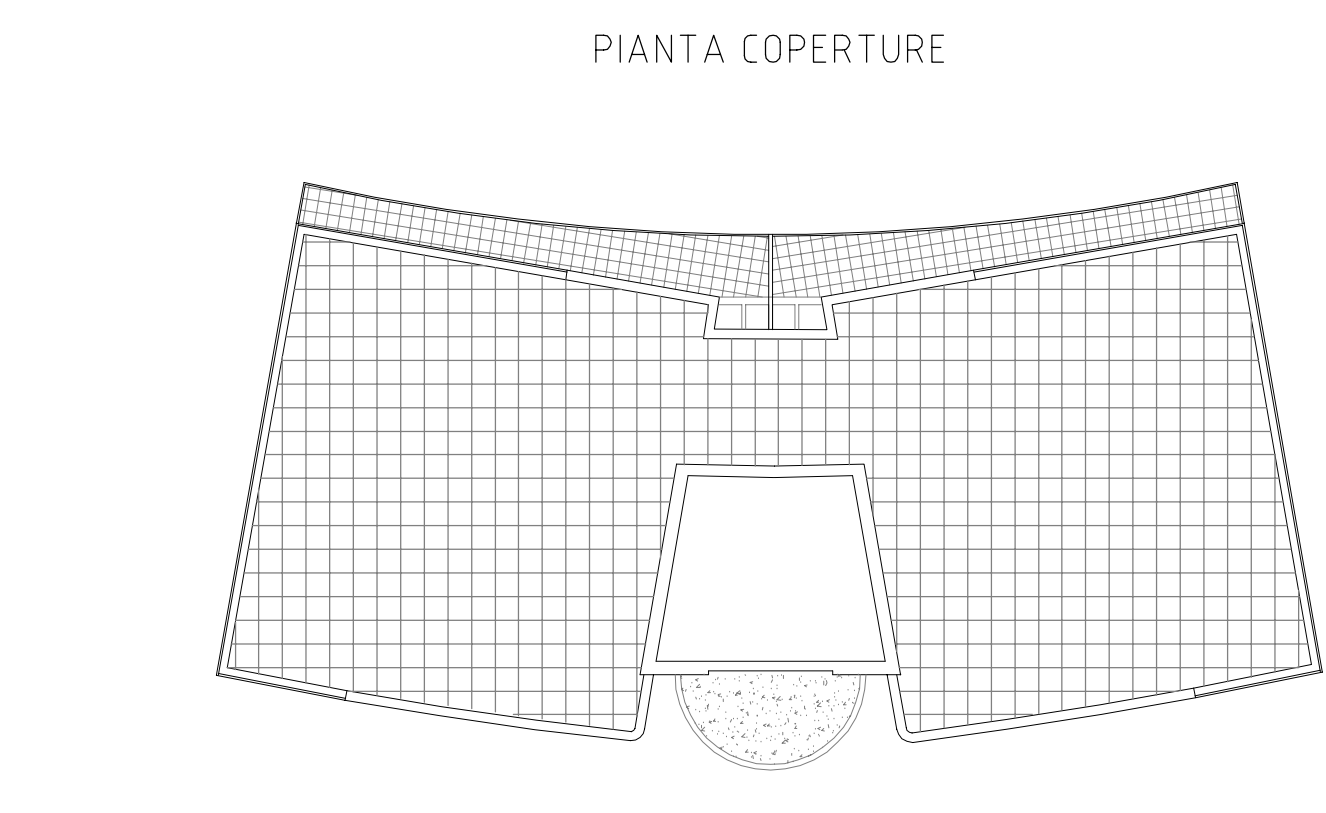
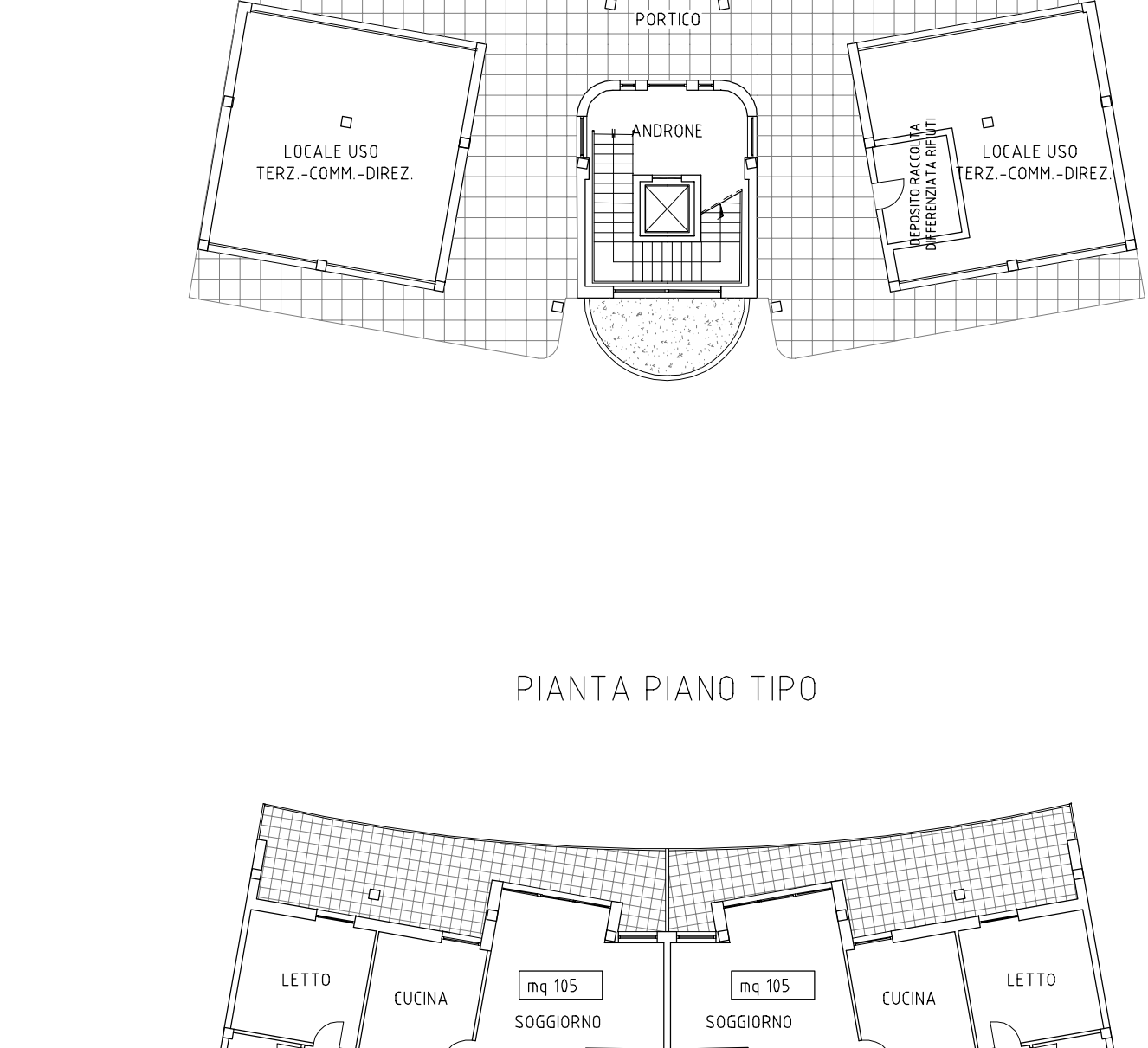
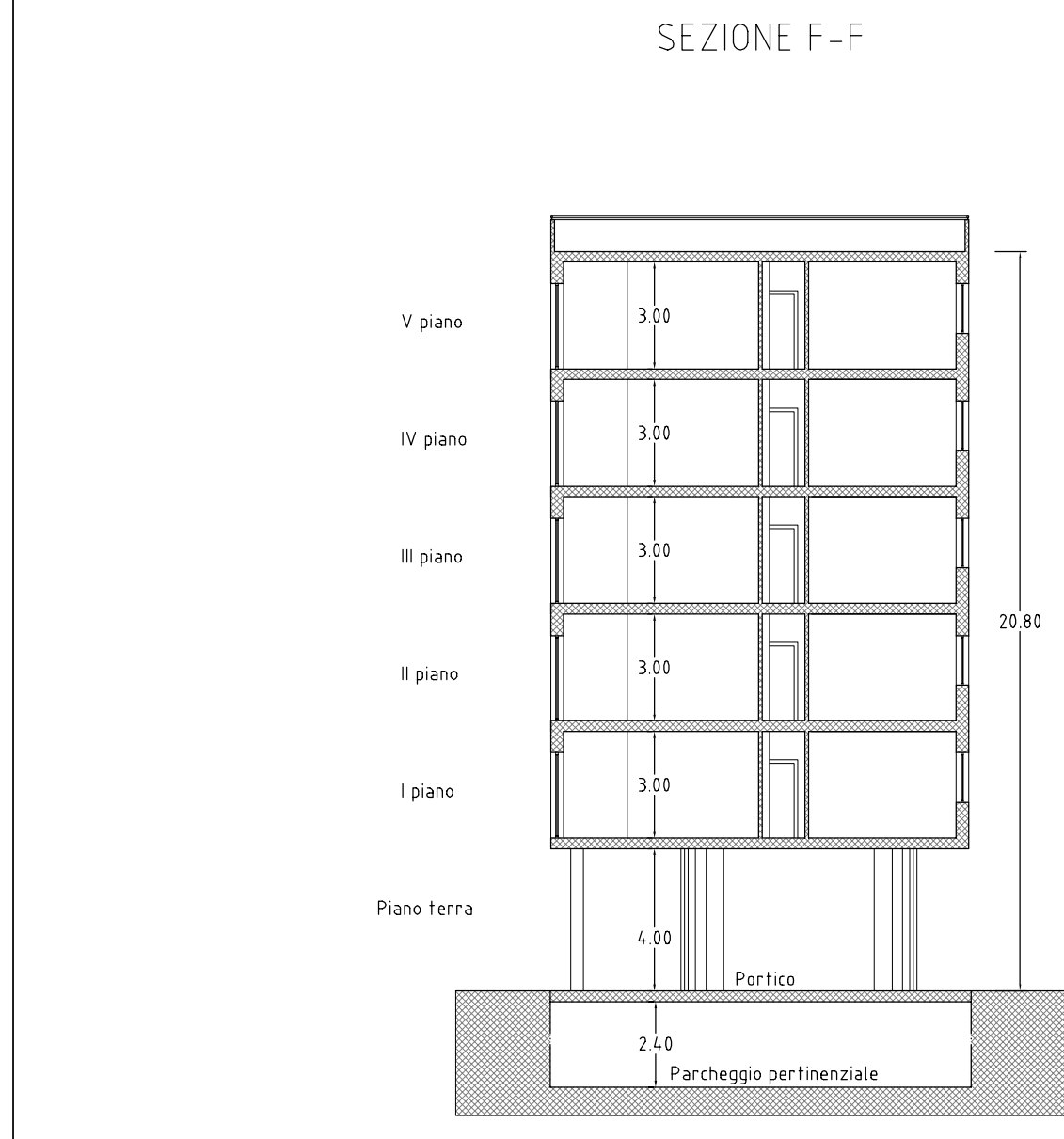
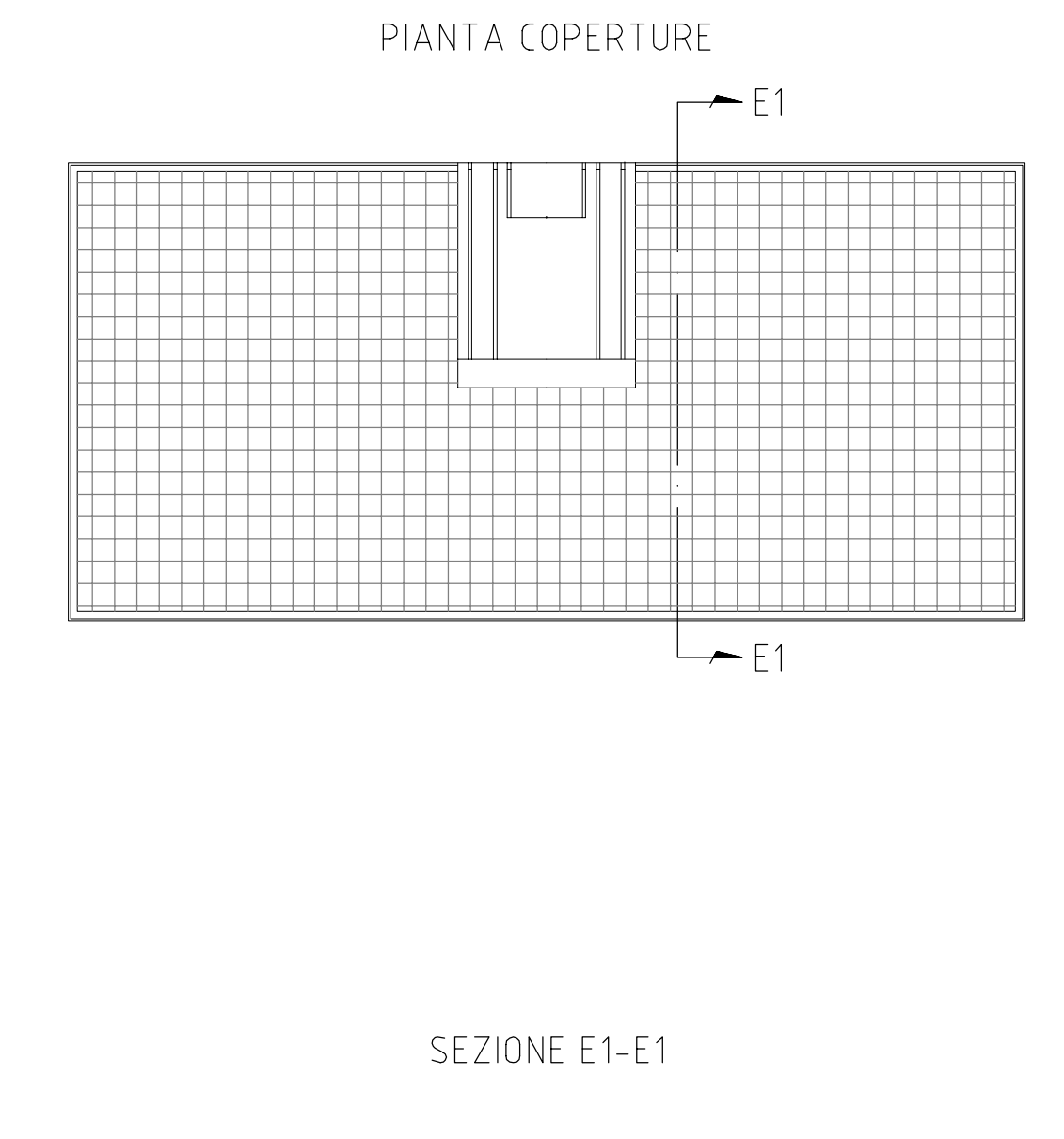
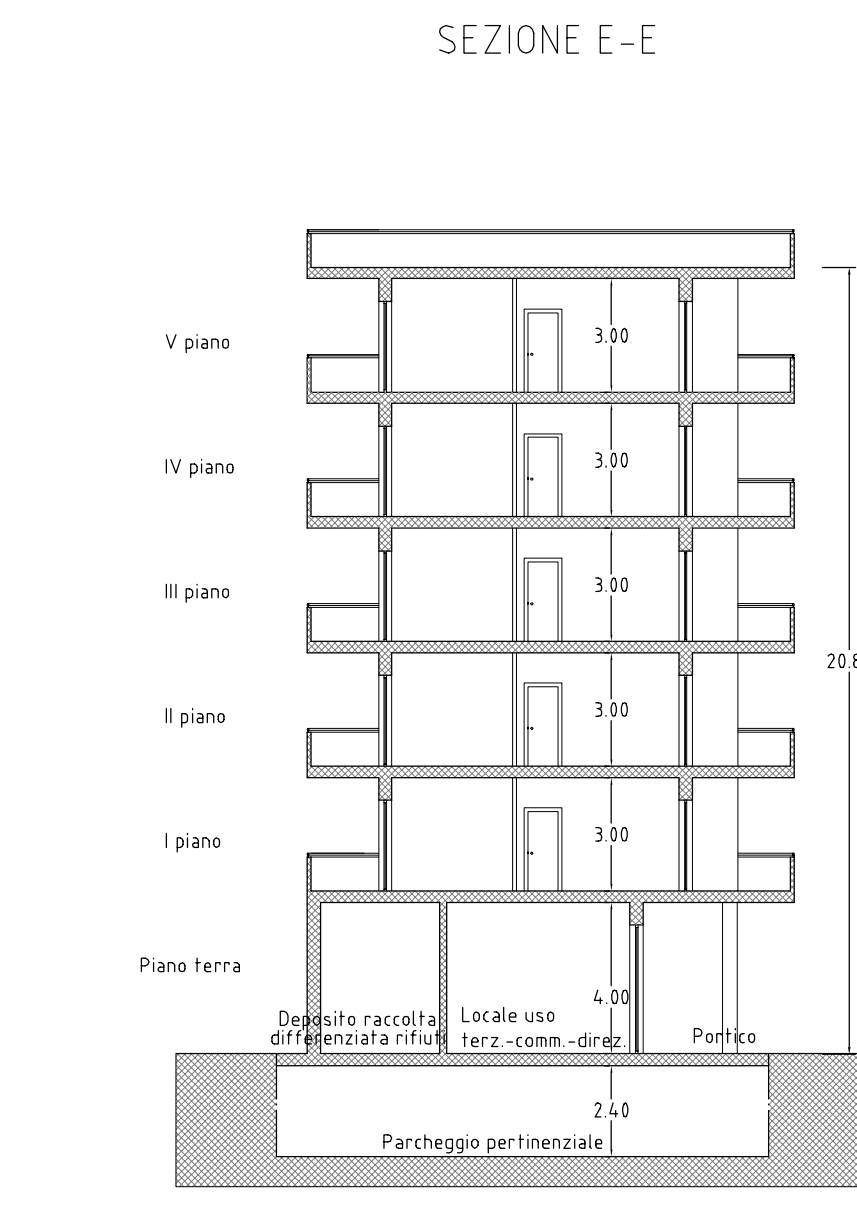
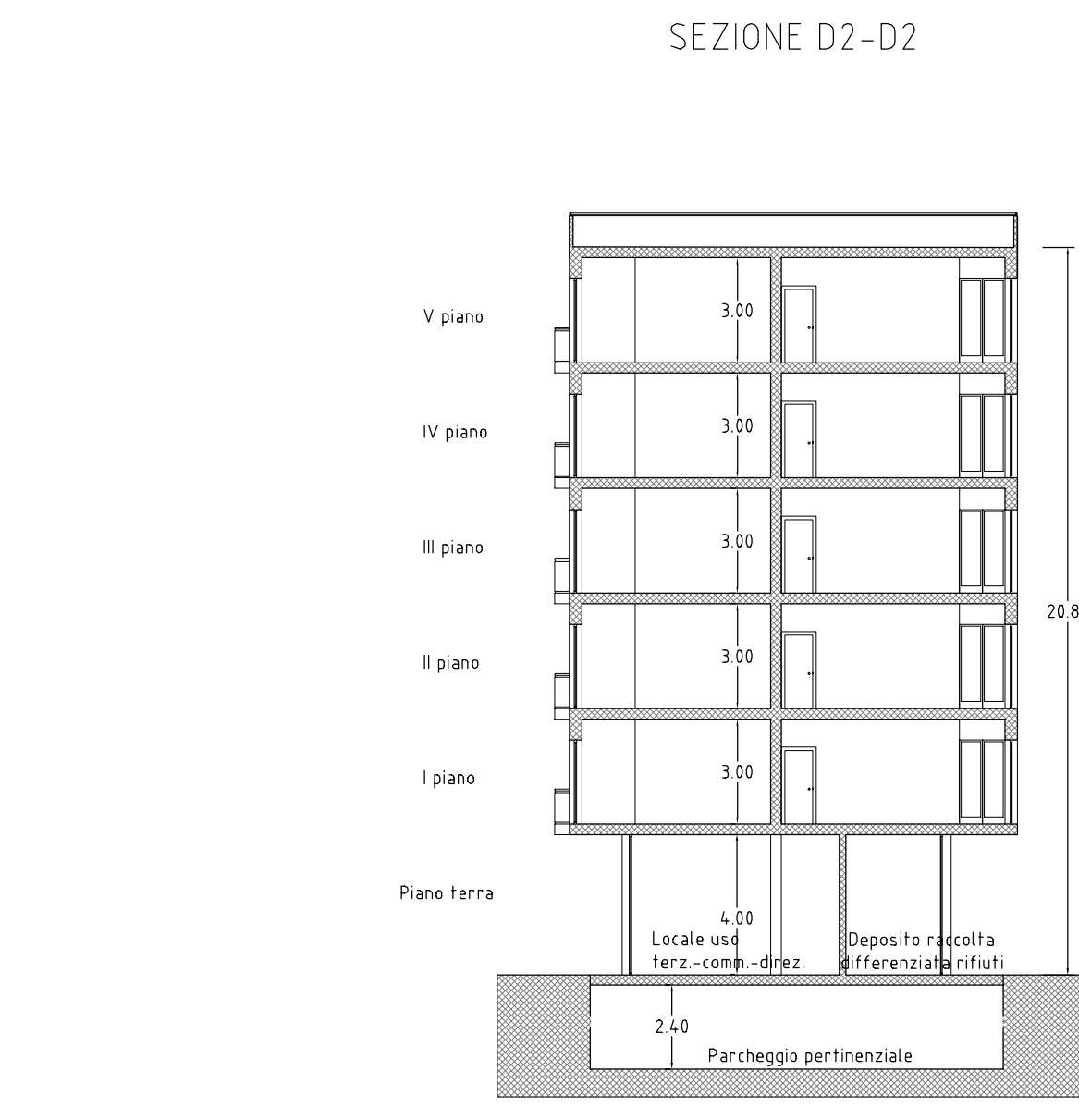
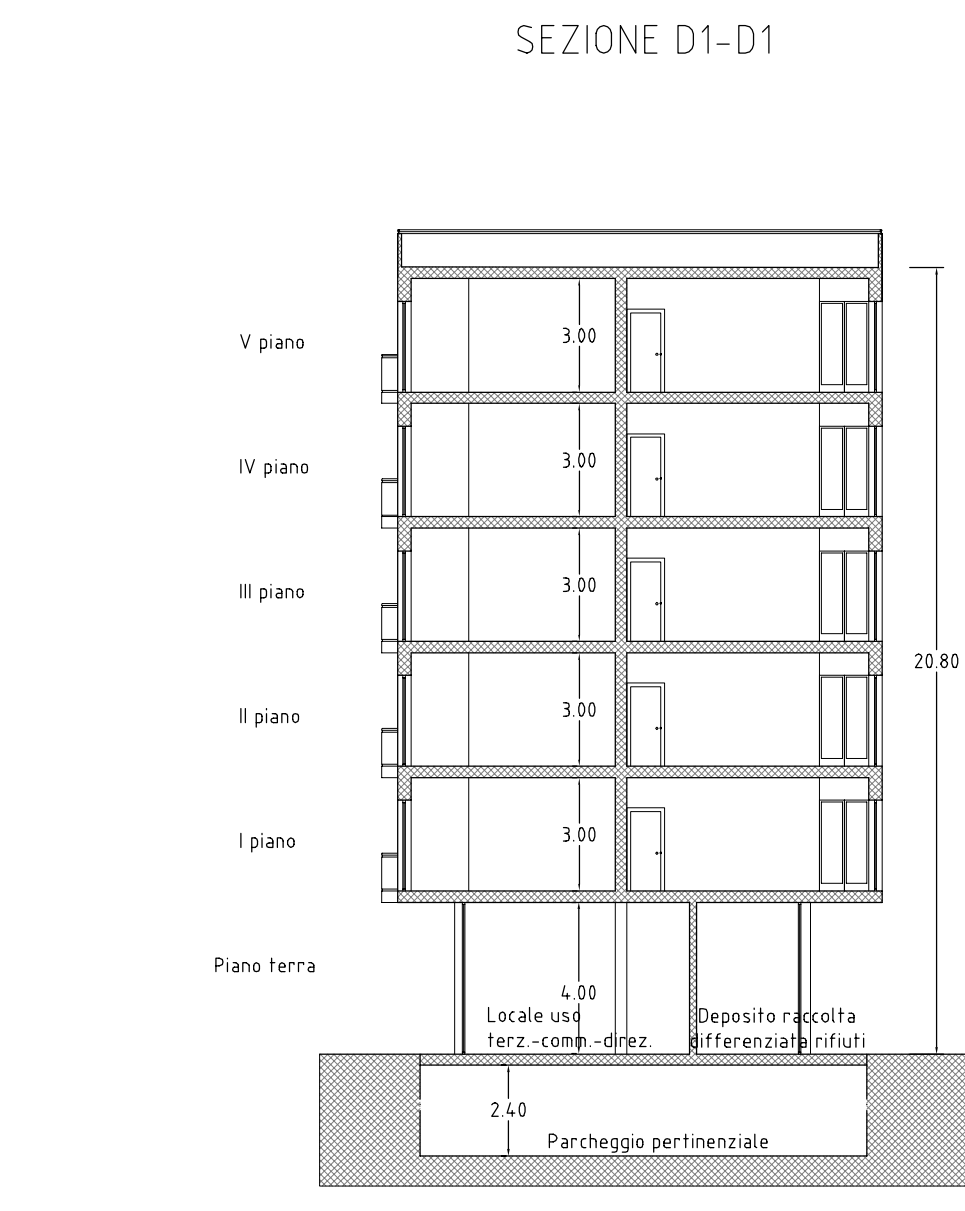
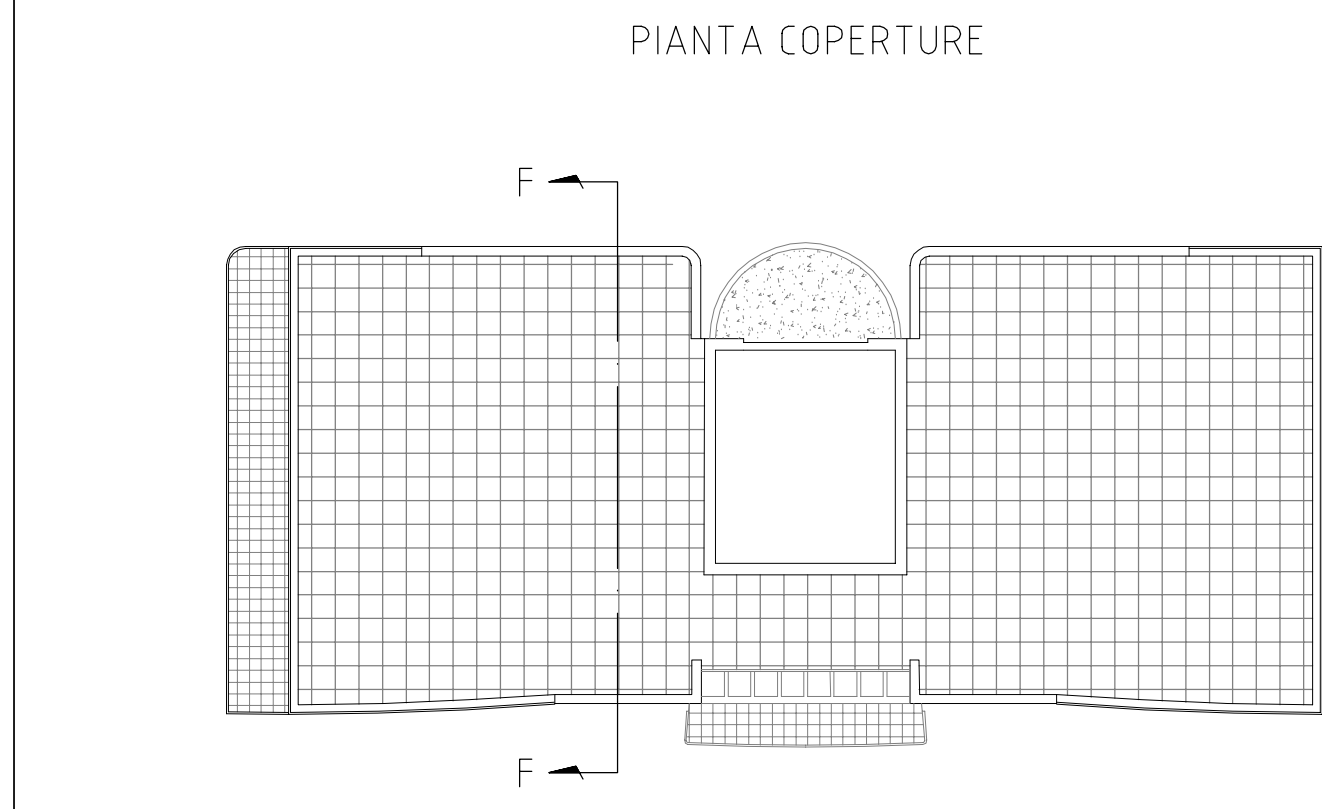
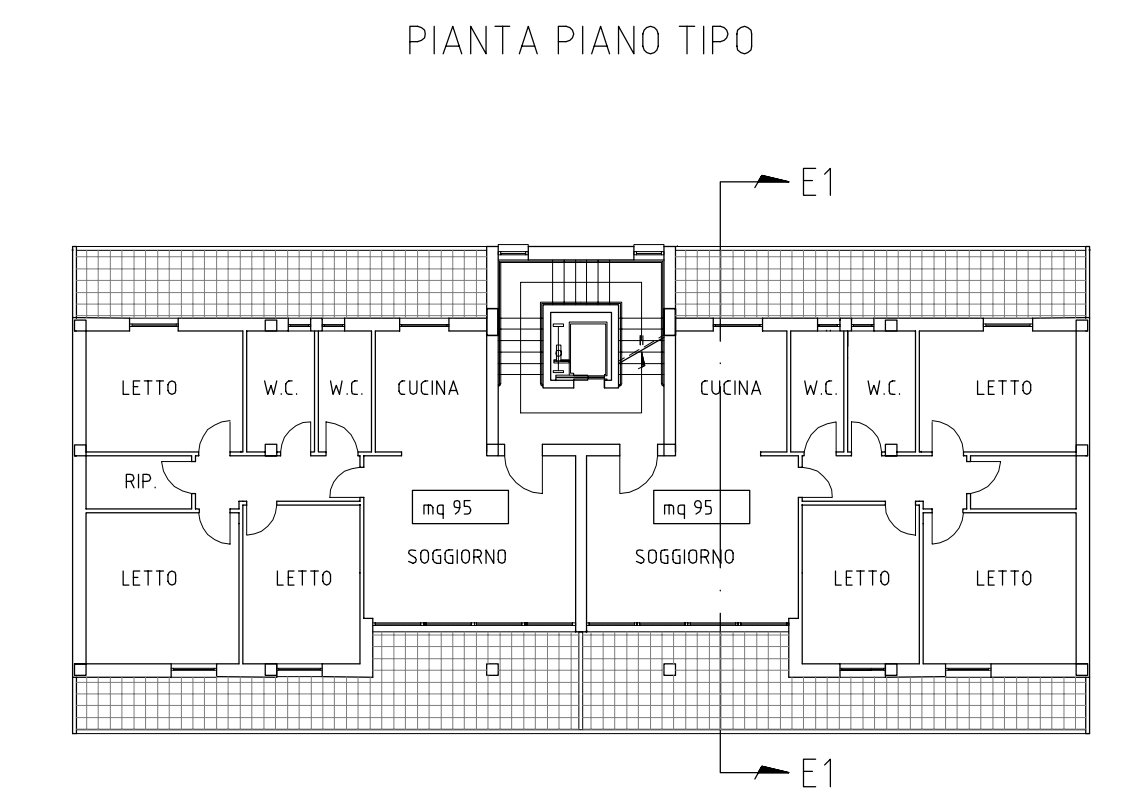
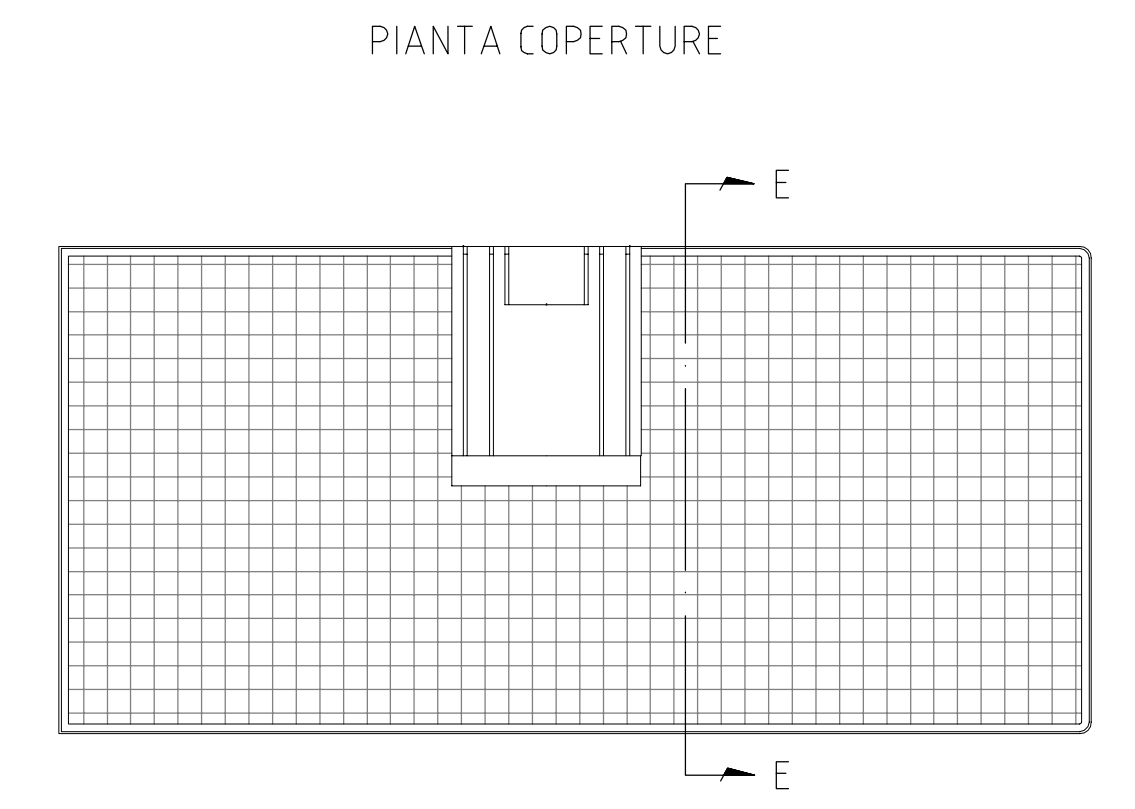
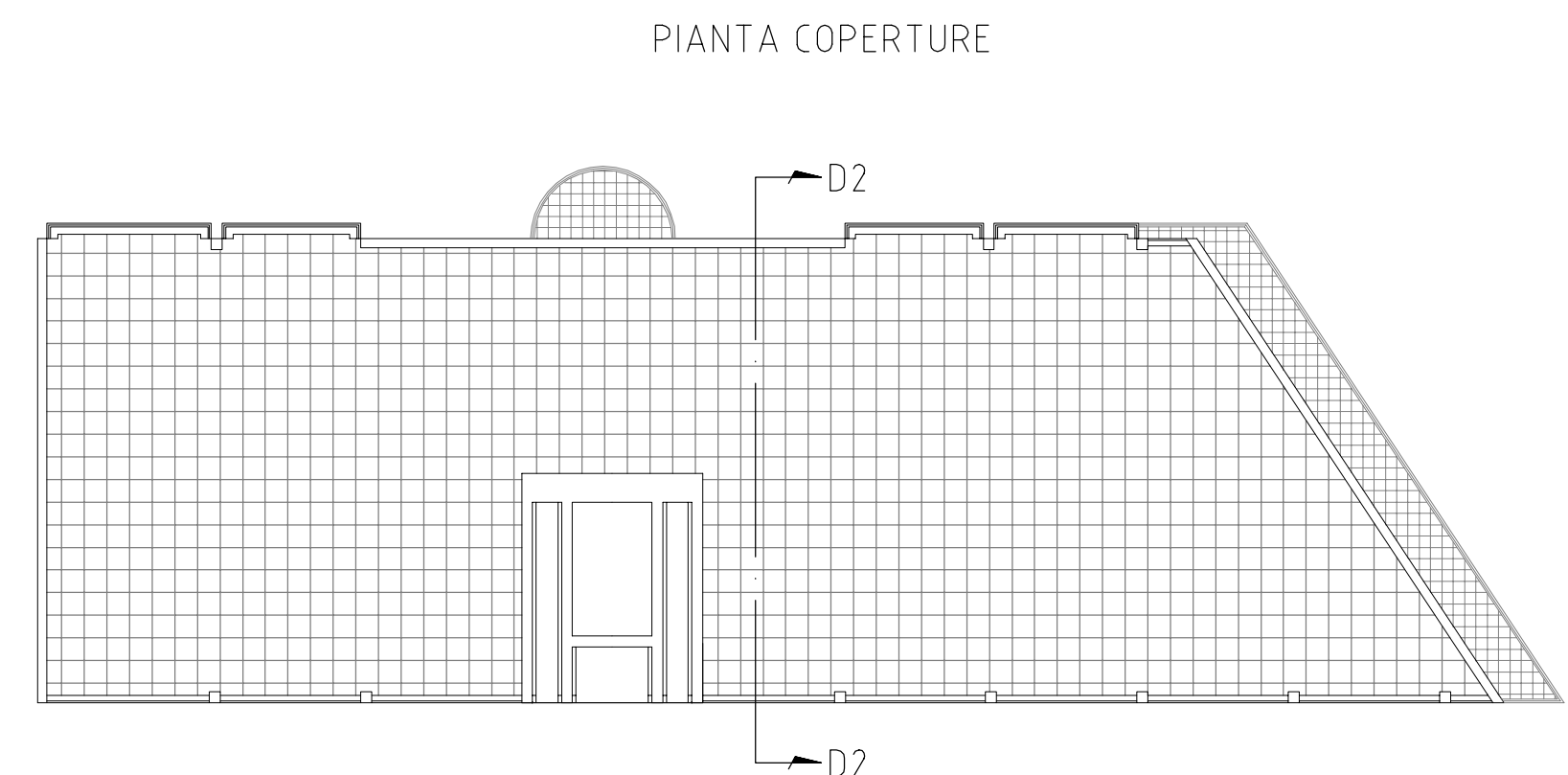
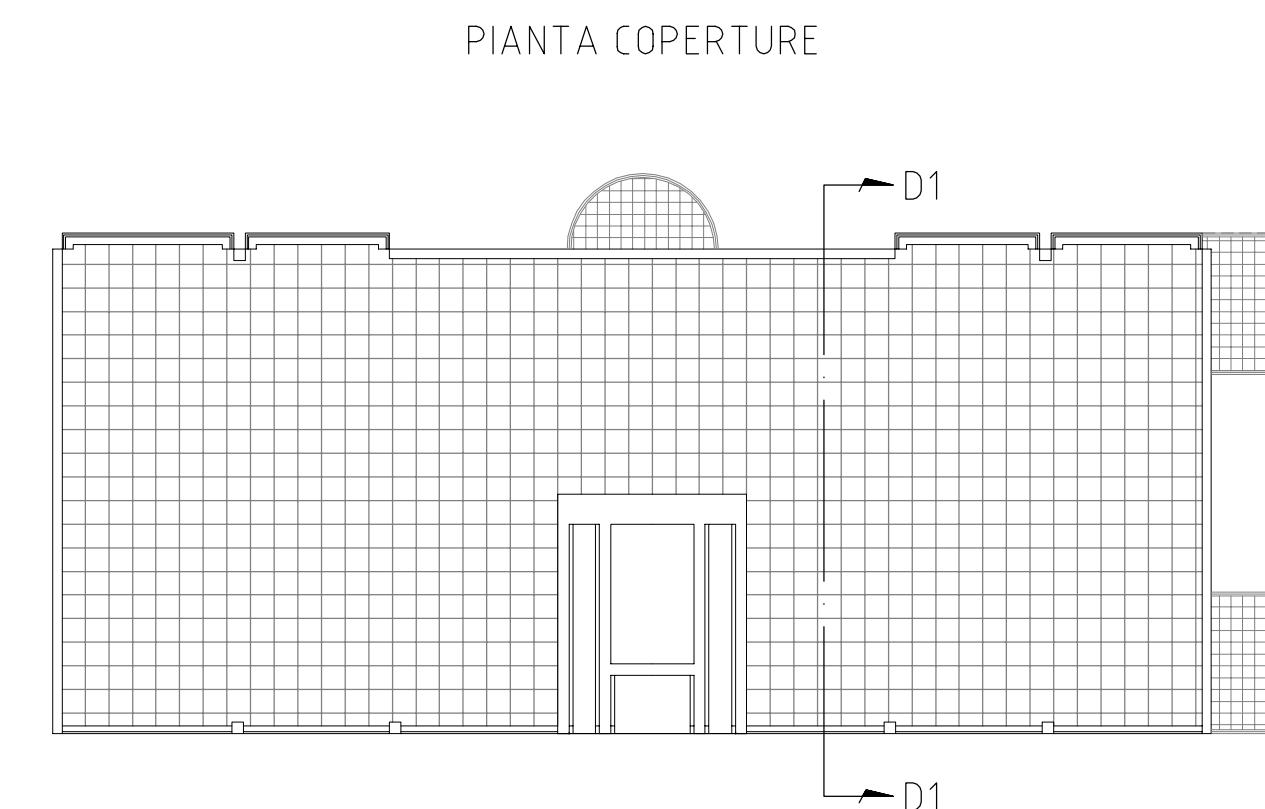
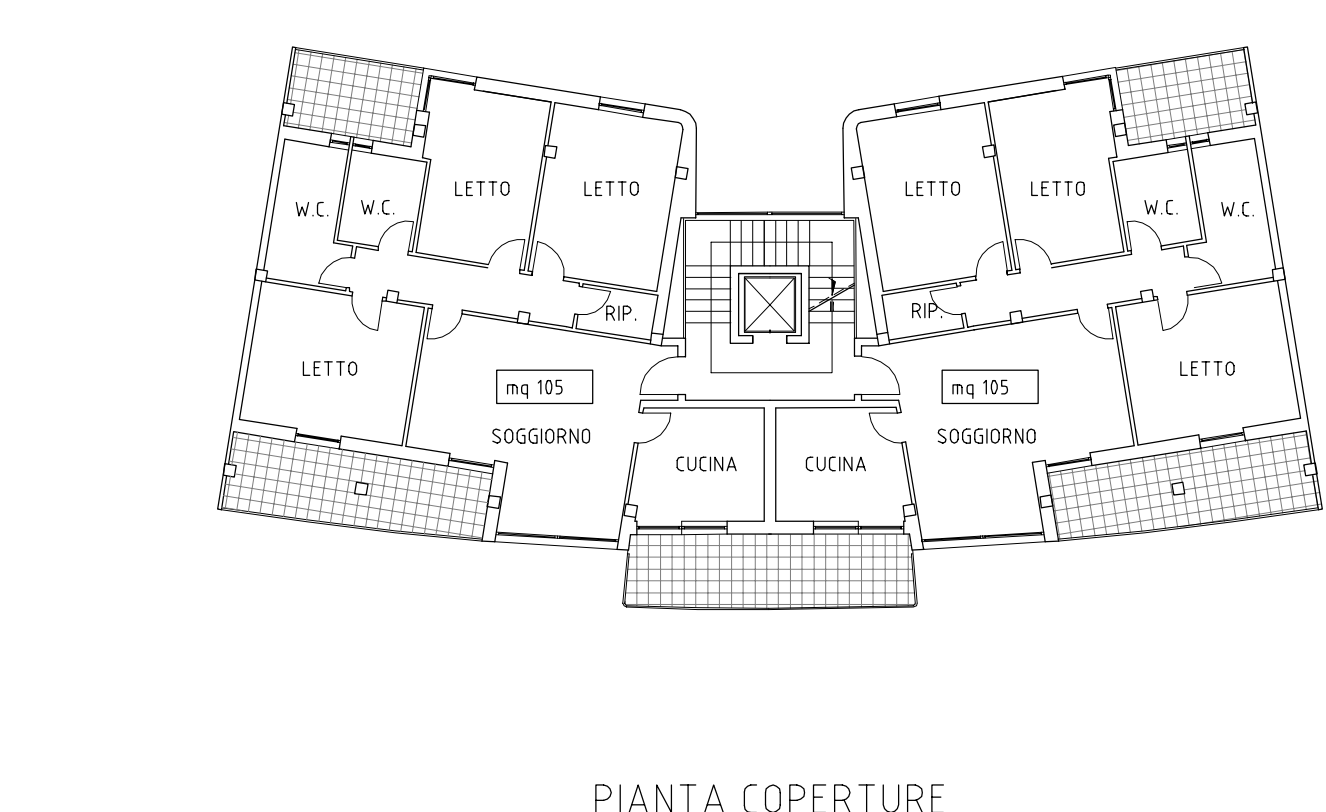
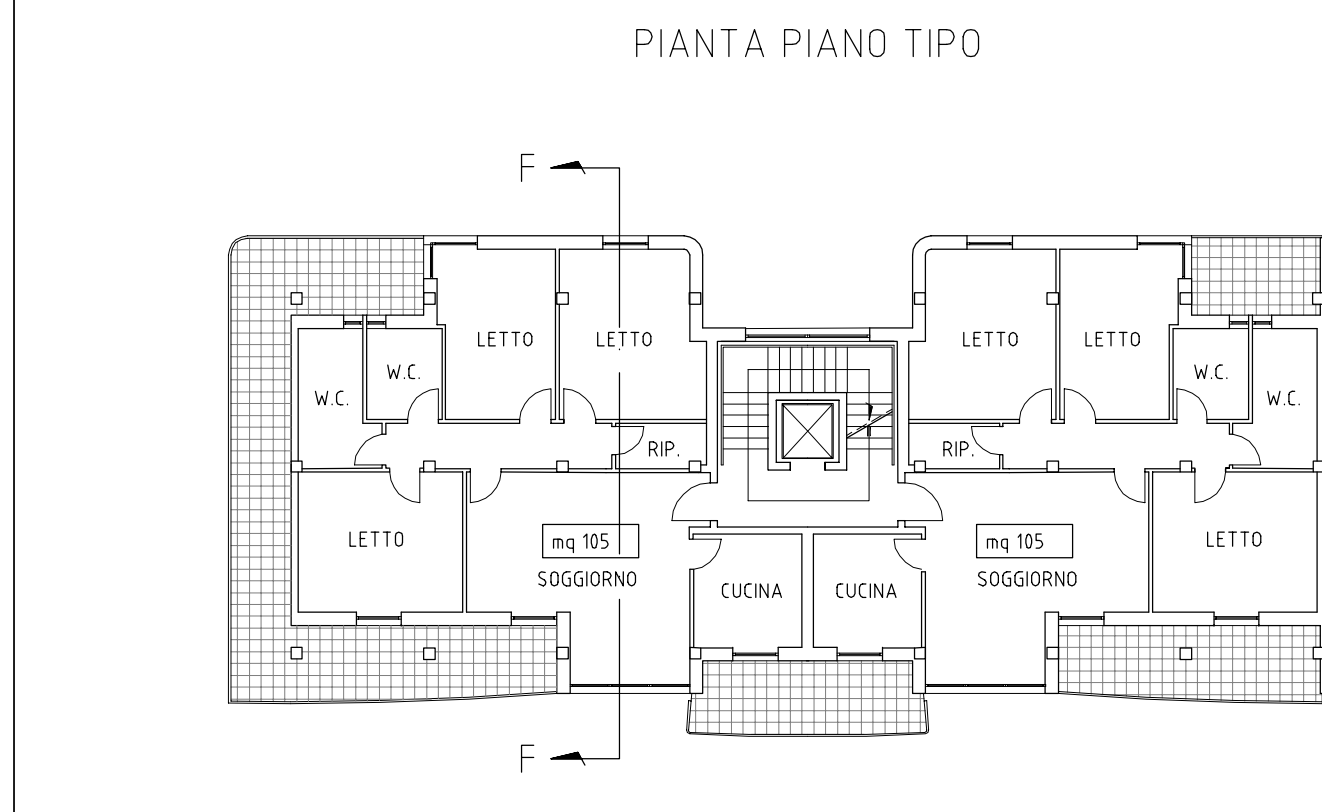
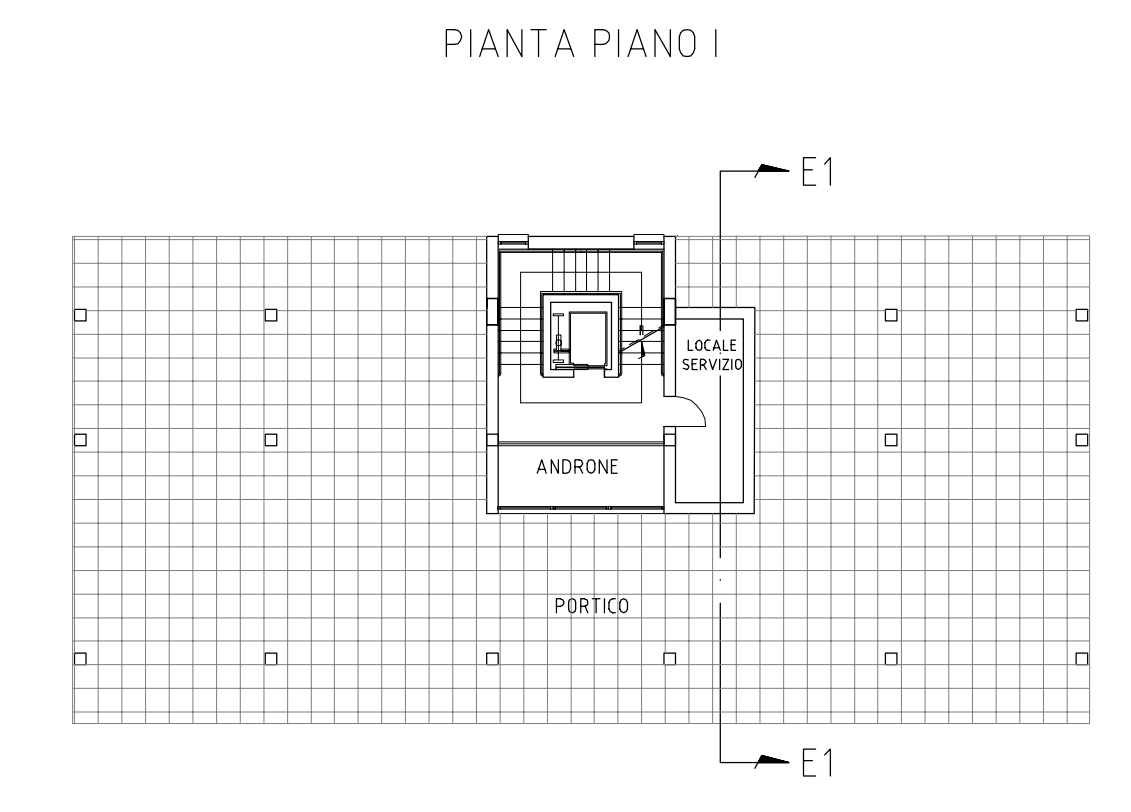
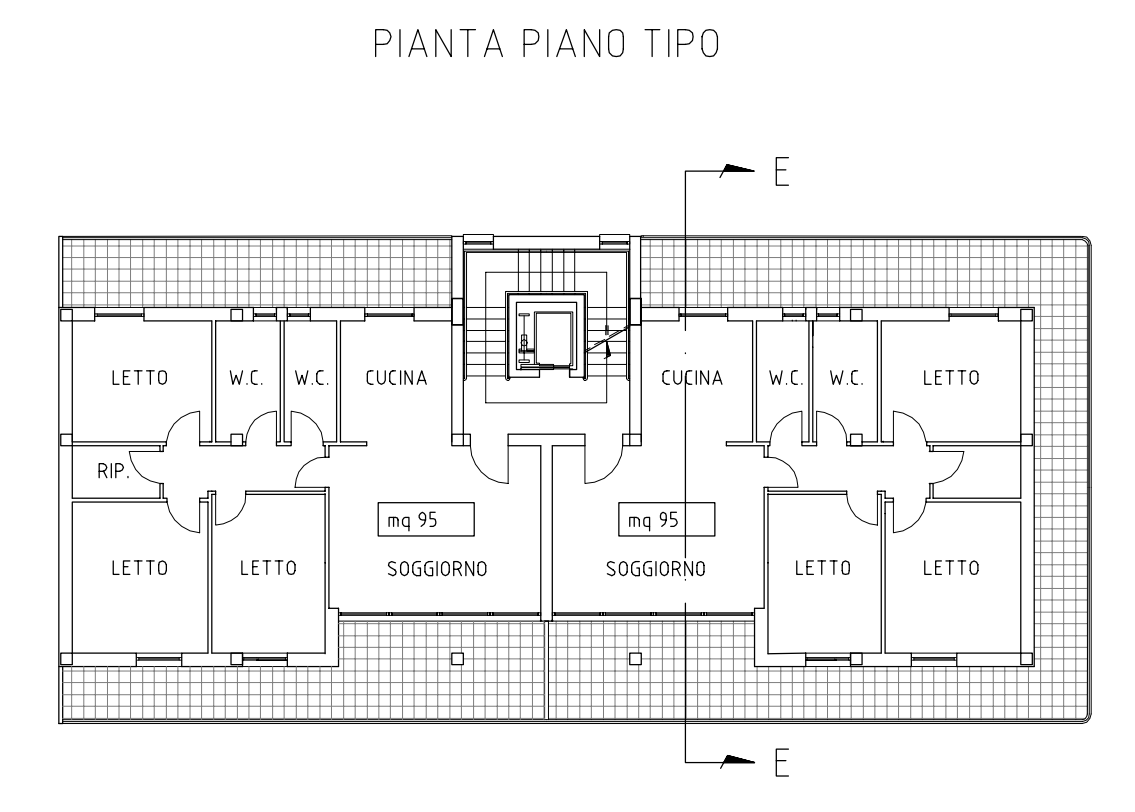
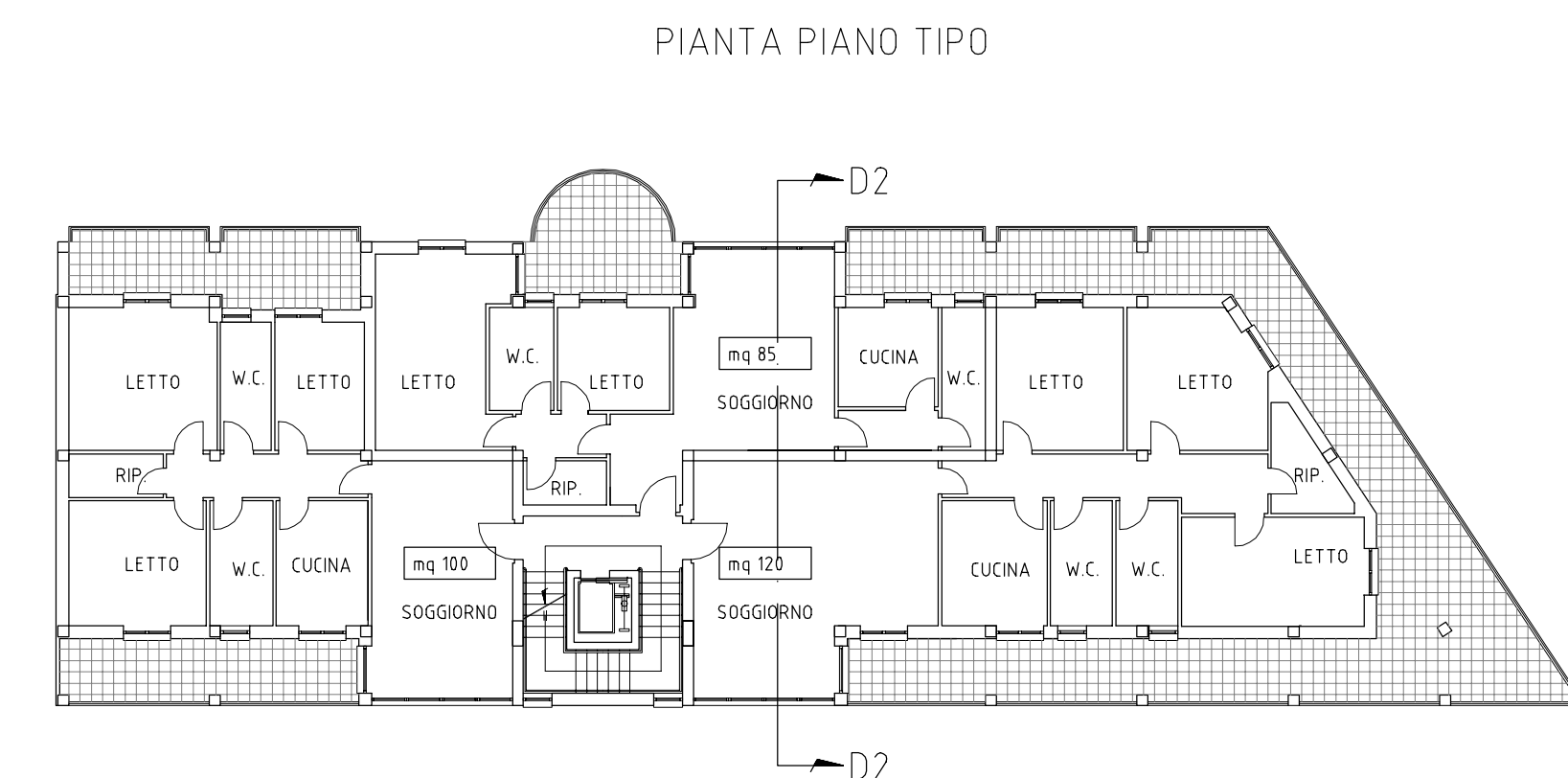
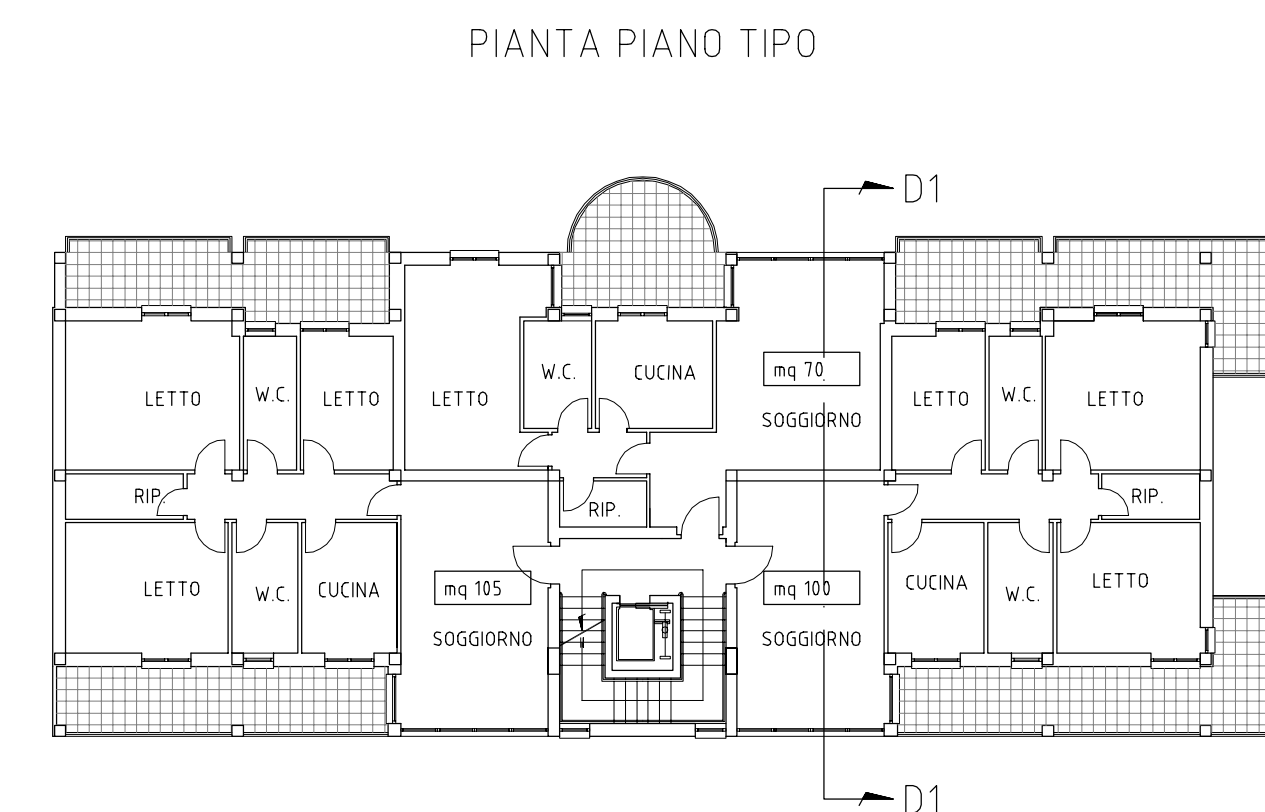
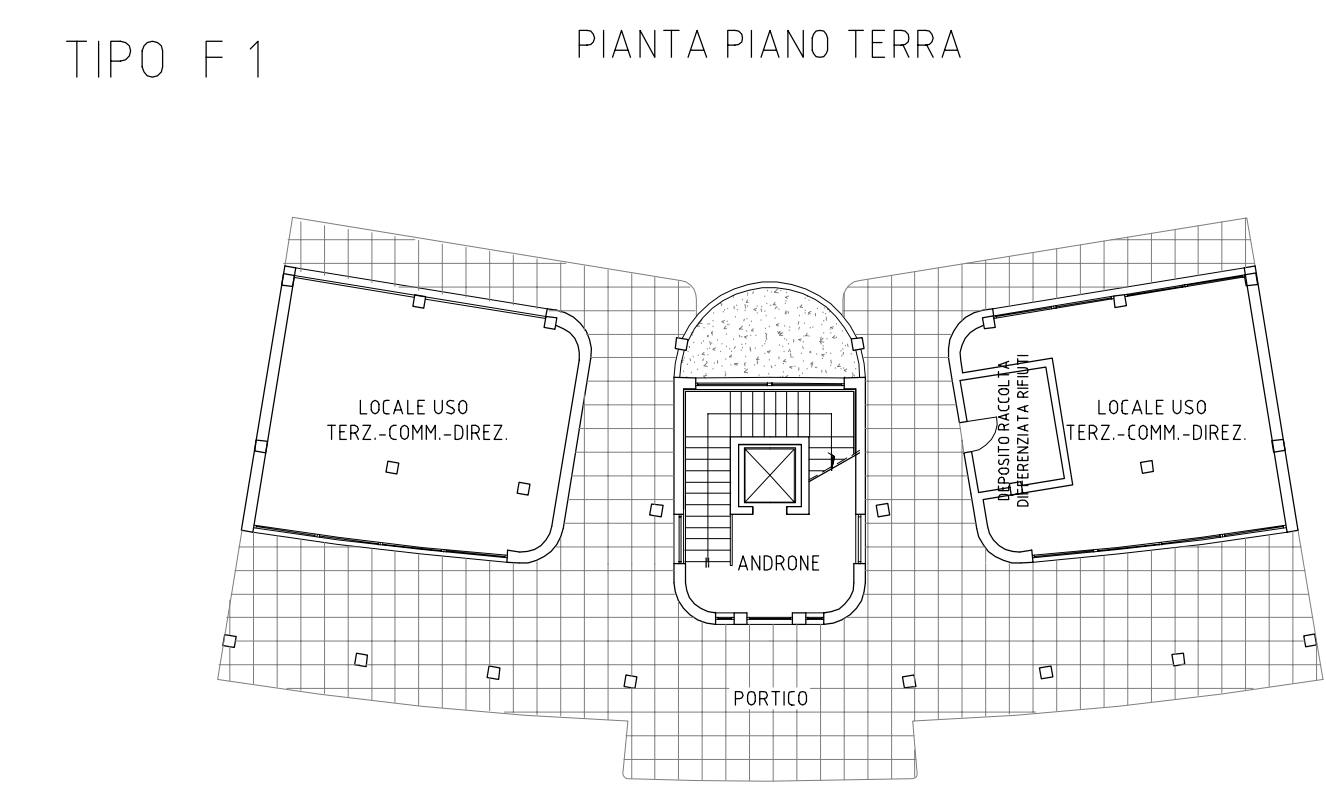
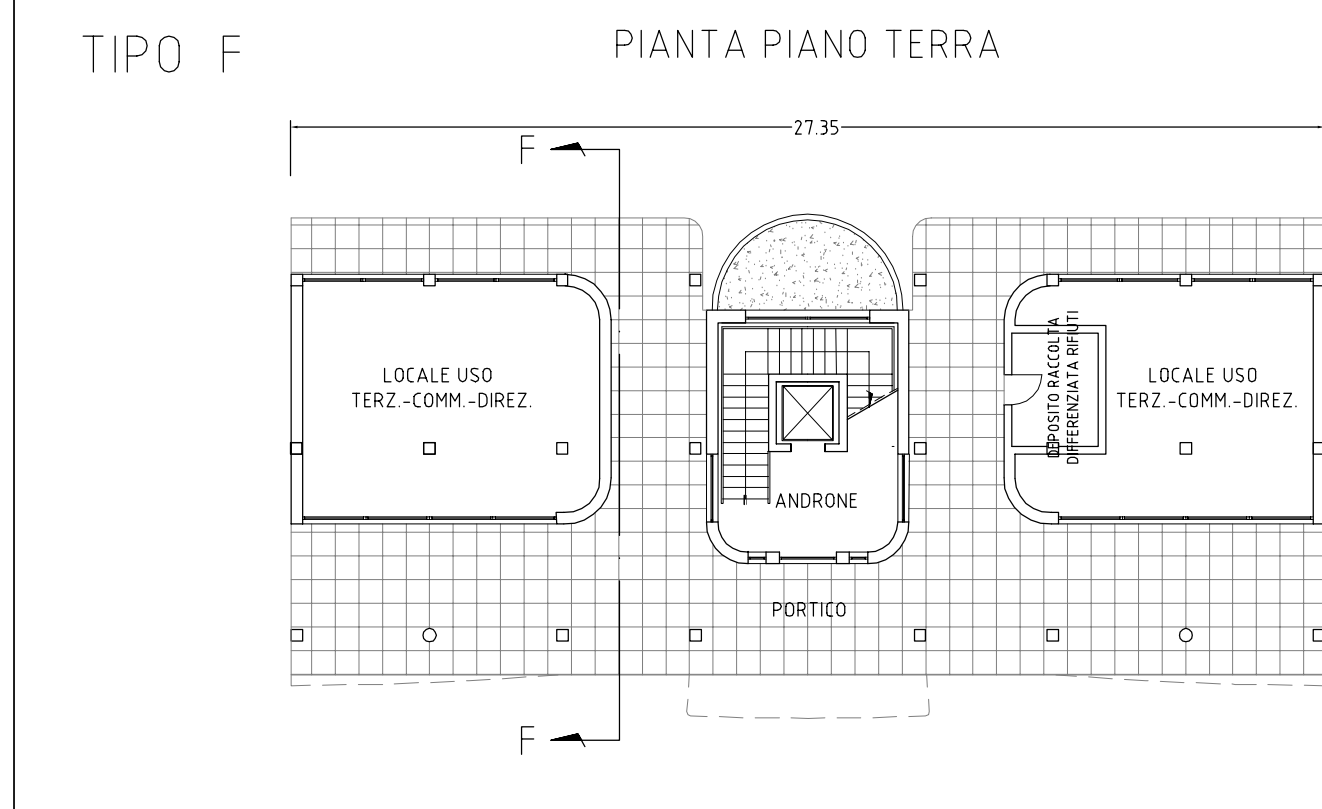
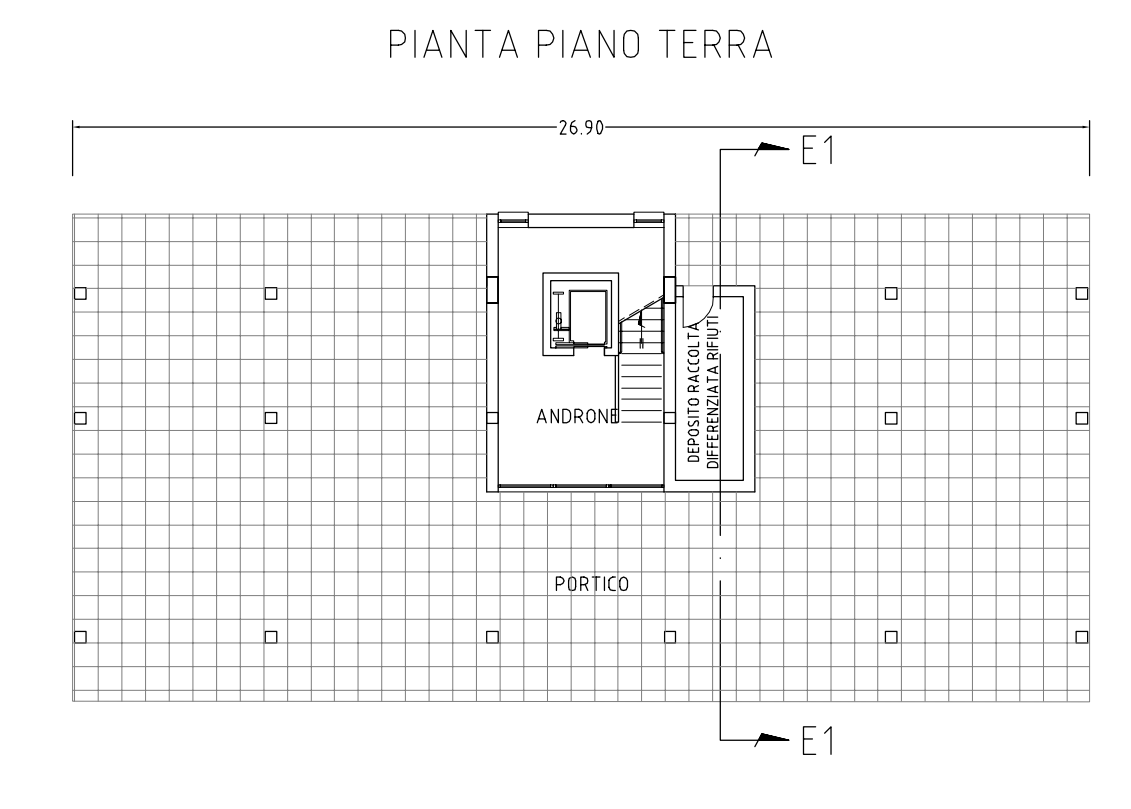
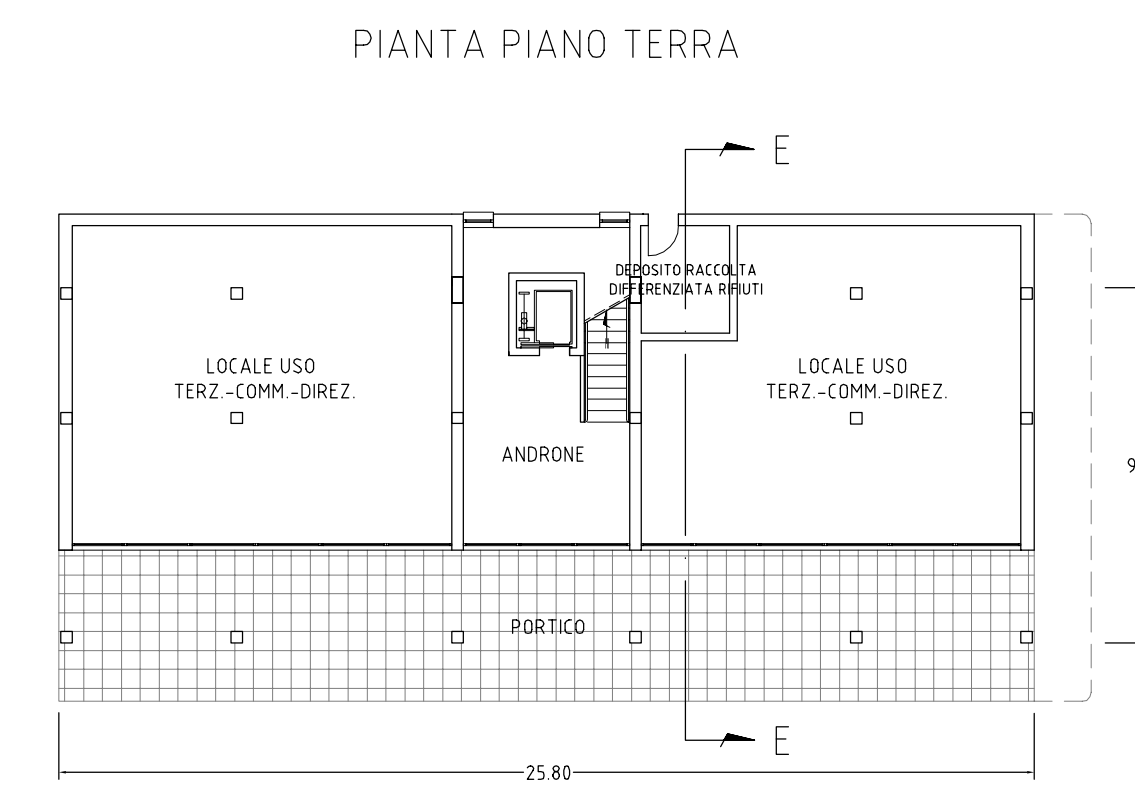
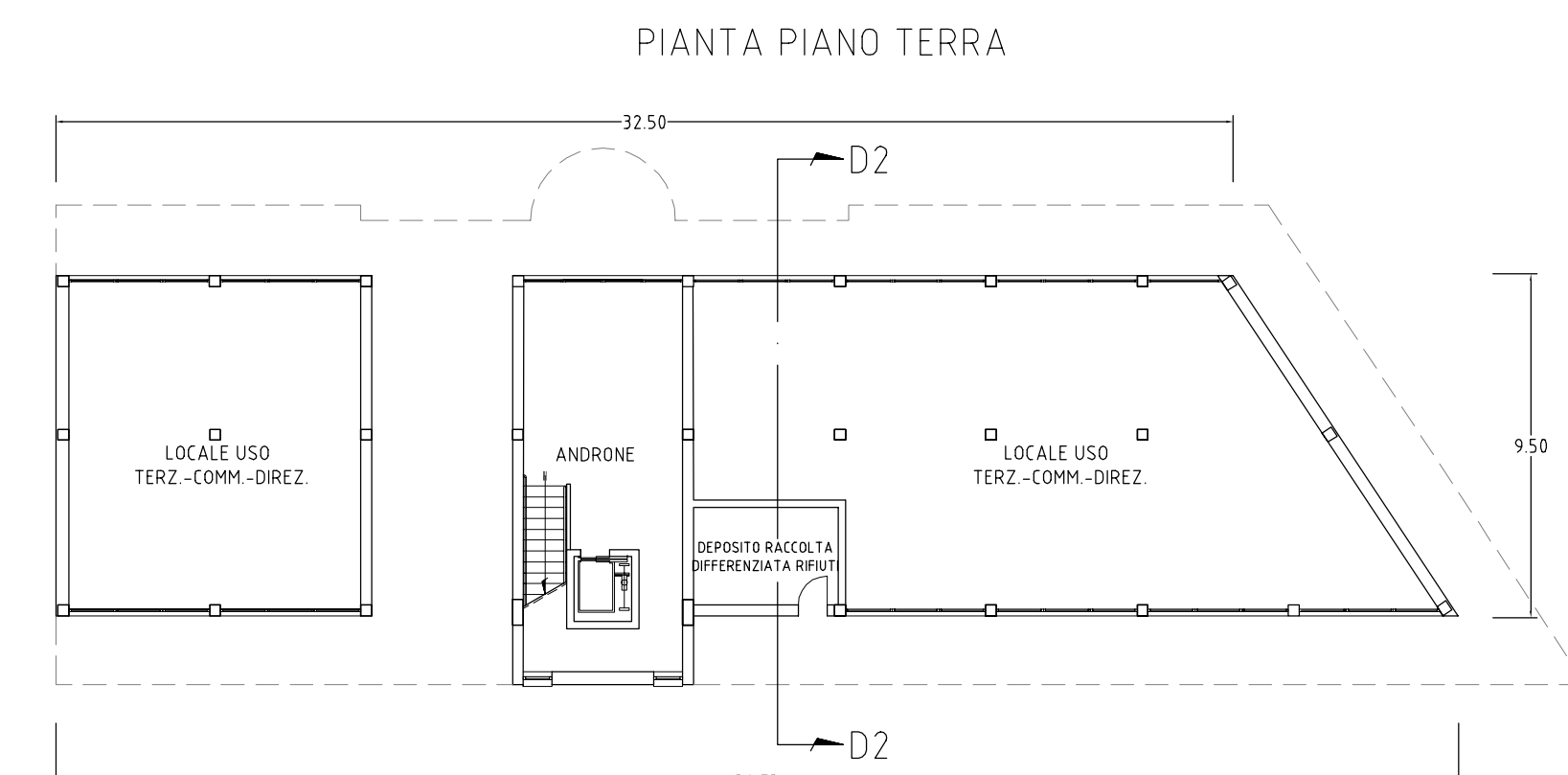
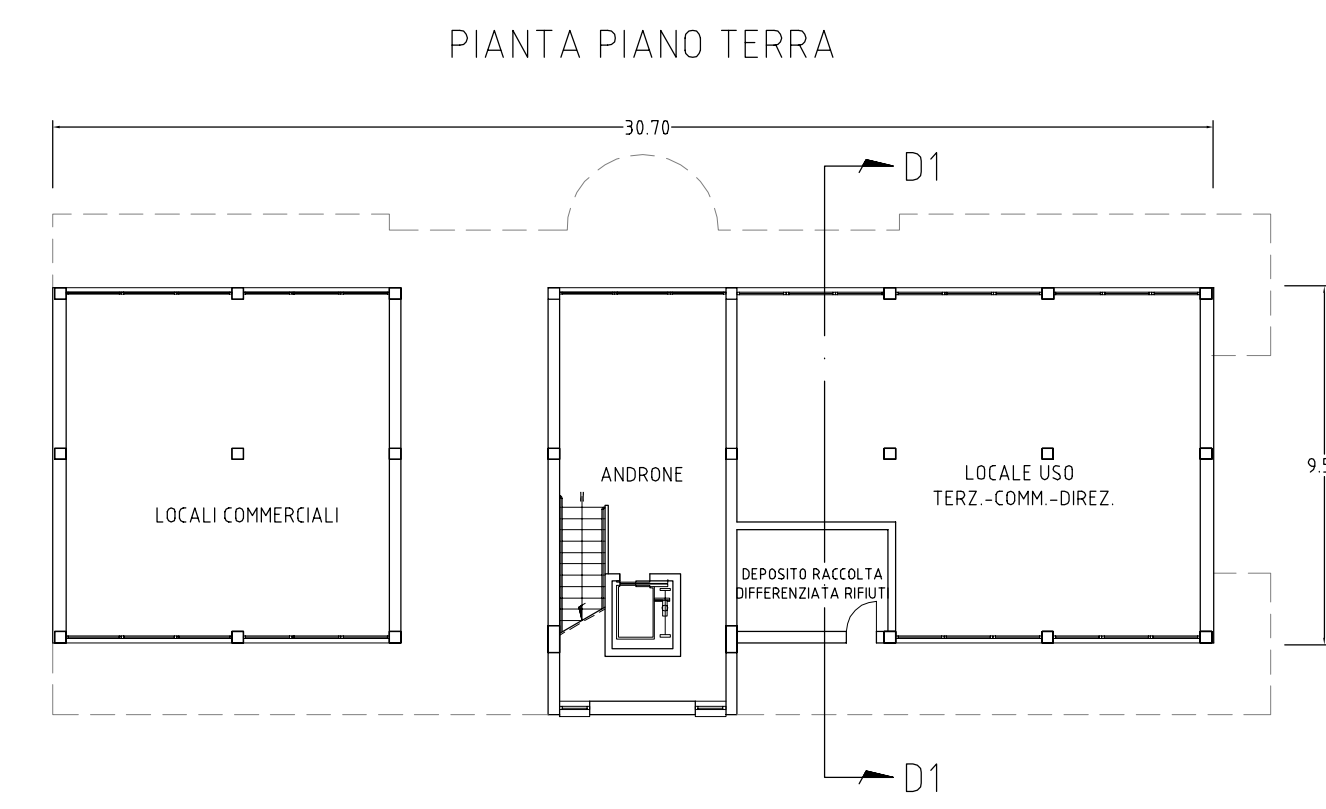
Tipo D1	
n. piani	n.5 + PT
n. piani res. + PT	n. 20/30
volume lordo	mc. 6.350
ala residenz.	mq. 1.705
ala terr. comm. (DREZ)	mq. 191
n./s.u. alloggi	
piano tipo	n. 3 mq 105, mq 70, mq 100
n. totale alloggi	n. 15

Tipo D2	
n. piani	n.5 + PT
n. piani res. + PT	n. 20/30
volume lordo	mc. 7.469
ala residenz.	mq. 1.928
ala terr. comm. (DREZ)	mq. 238
n./s.u. alloggi	
piano tipo	n. 3 mq 100, mq 85, mq 120
n. totale alloggi	n. 15

Tipo E	
n. piani	n.5 + PT Porticato
n. piani res. + PT	n. 20/30
volume lordo	mc. 4.965
ala residenz.	mq. 1.258
ala terr. comm. (DREZ)	mq. 175
n./s.u. alloggi	
piano tipo	n. 2 mq 95
n. totale alloggi	n. 10

Tipo E1	
n. piani	n.4 + PT Porticato doppia att.
n. piani res. + PT	n. 20/30
volume lordo	mc. 3.751
ala residenz.	mq. 1.103
n./s.u. alloggi	
piano tipo	n. 2 mq 95
n. totale alloggi	n. 8

Tipo F - F1 - F2	
n. piani	n.5 + PT Porticato
n. piani res. + PT	n. 20/30
volume lordo	mc. 5.158
ala residenz.	mq. 1.405
ala terr. comm. (DREZ)	mq. 102
n./s.u. alloggi	
piano tipo	n. 2 mq 105
n. totale alloggi	n. 10



TAV.4b TIPI EDILIZI scala 1 : 200

gruppo di lavoro
COORDINATORE DELLA PROGETTAZIONE
Arch. Bianca De Roberto

Progettazione Urbanistica Arch. Giovanni Costa Arch. Adriana Dorado Progettazione Tecnico-ambientale Arch. Francesco Spanio Arch. Mariacristina Ferro Geom. Vincenzo de Sa	Progettazione Interni Ing. Vito Galderisi Ing. Nicola Di Martini Ing. Benedetto Troia Studio Geomatico Geom. Antonio Lombardi Studio Informativo Dott. Anna Lisa Spasola Arch. Daniela De Martino
--	---

IL DIRETTORE DI SETTORE
Arch. Bianca De Roberto