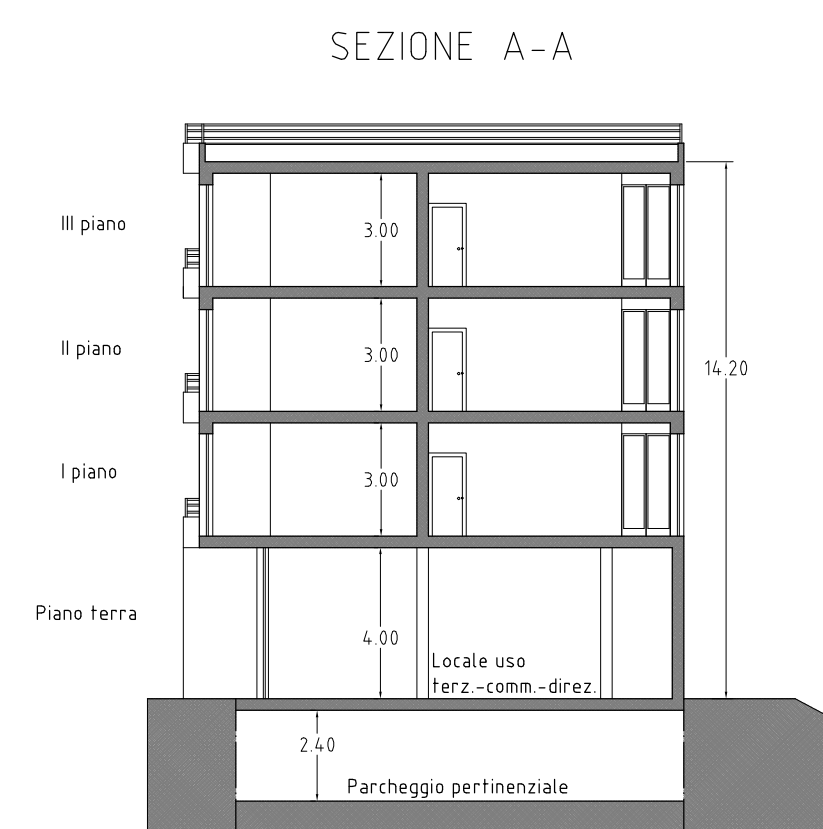
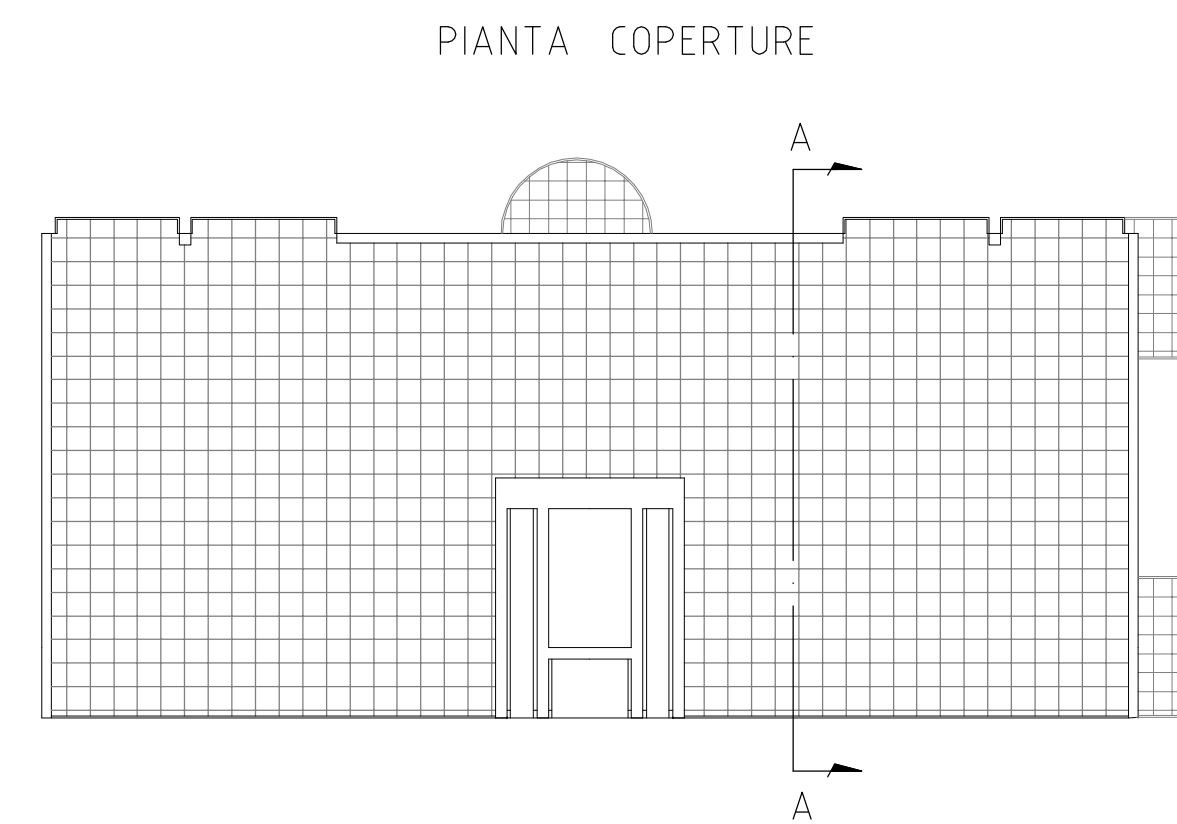
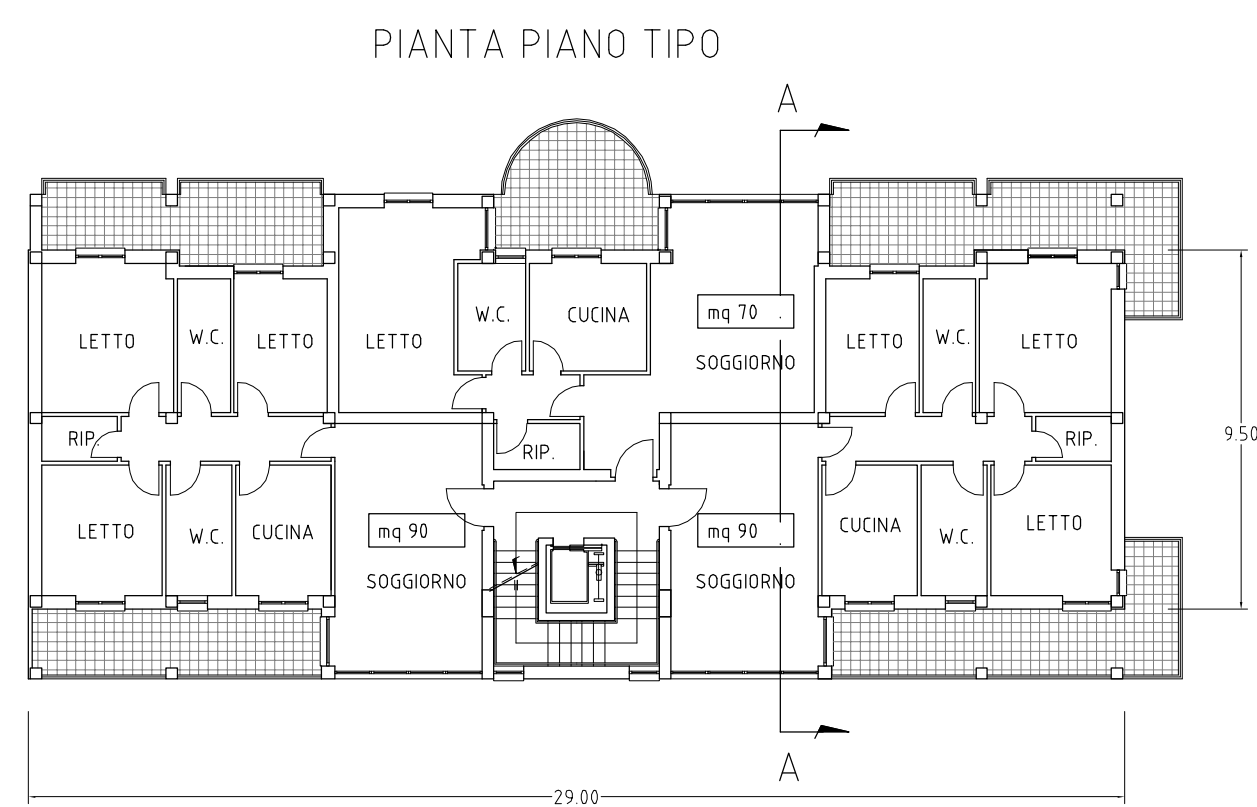
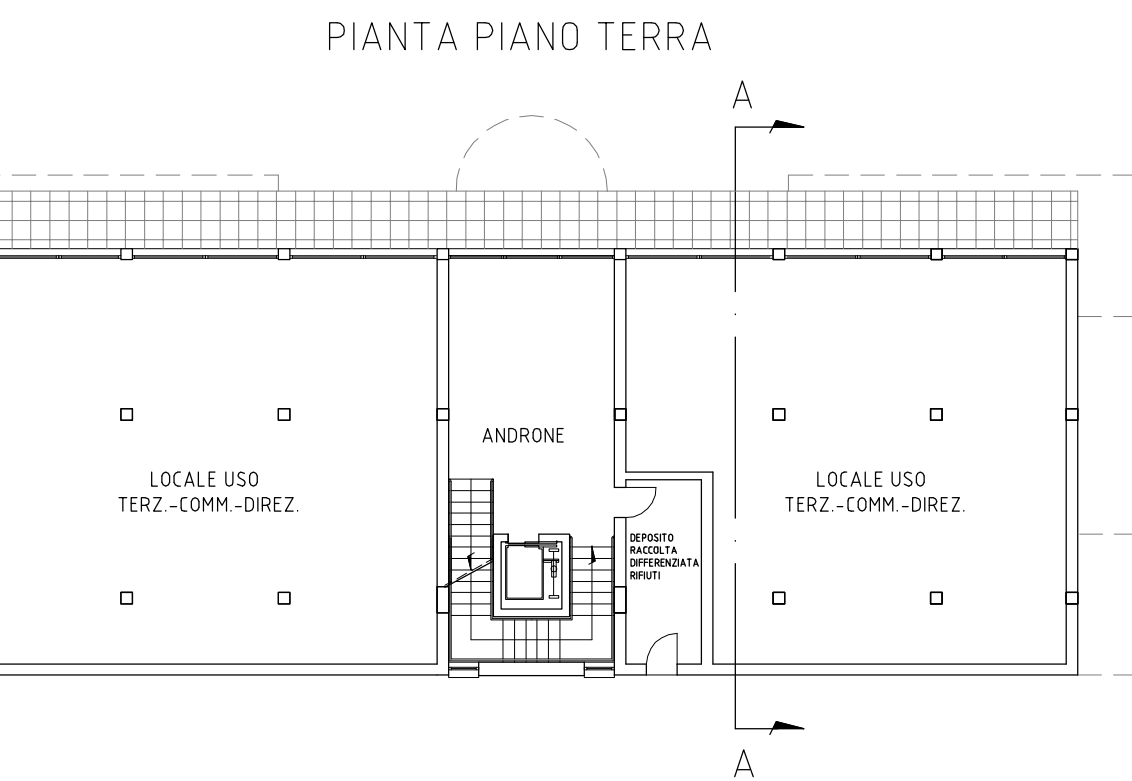
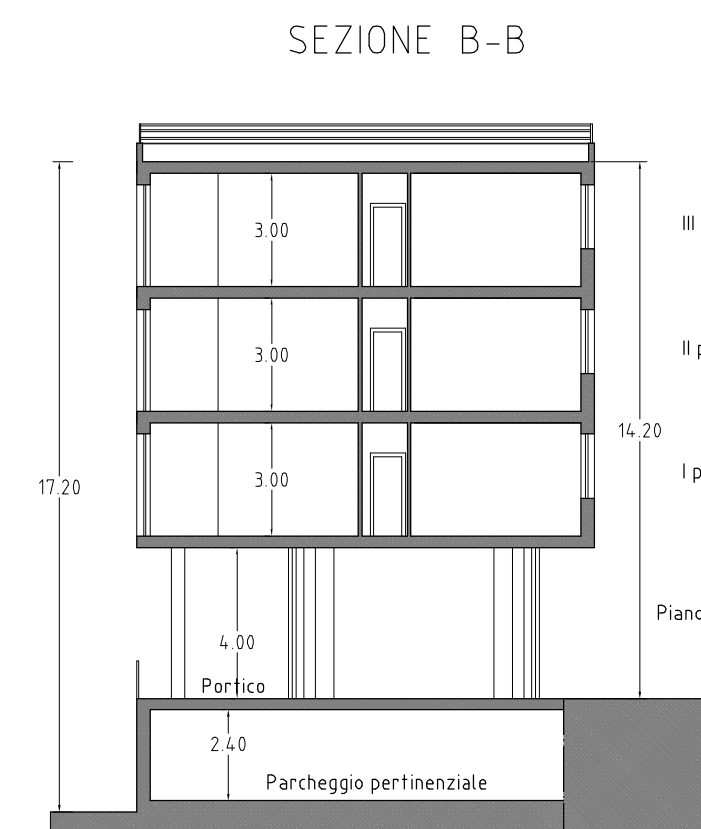
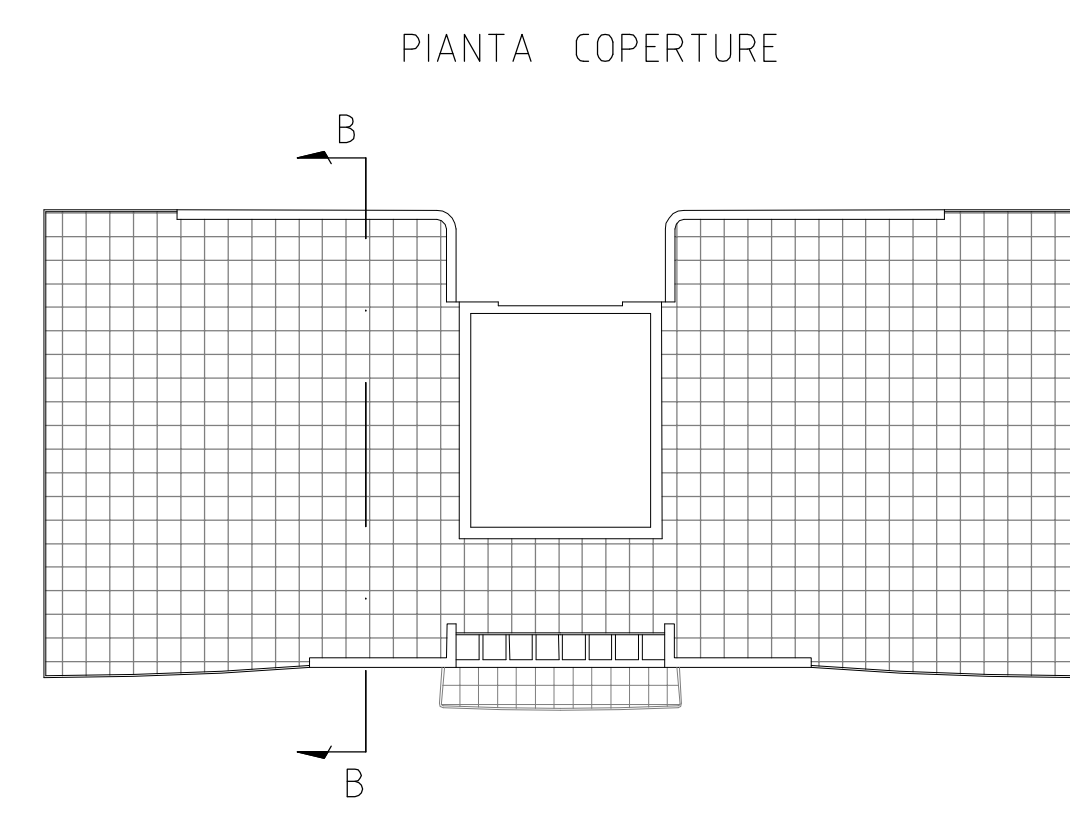
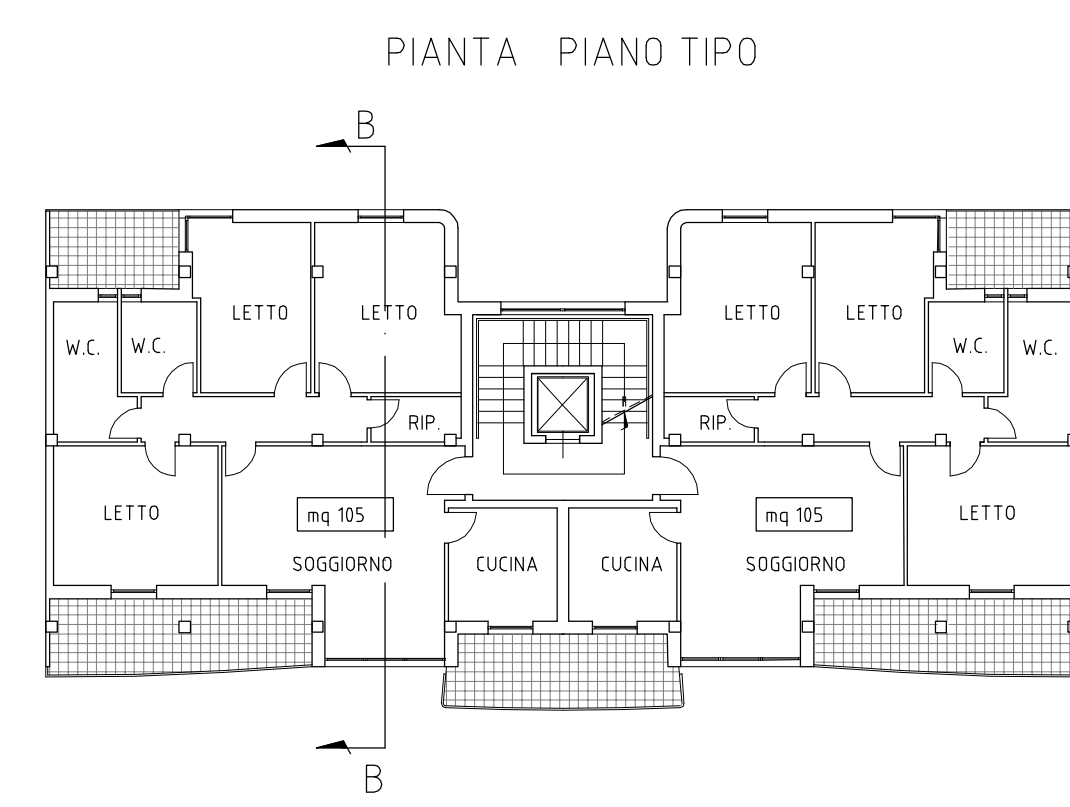
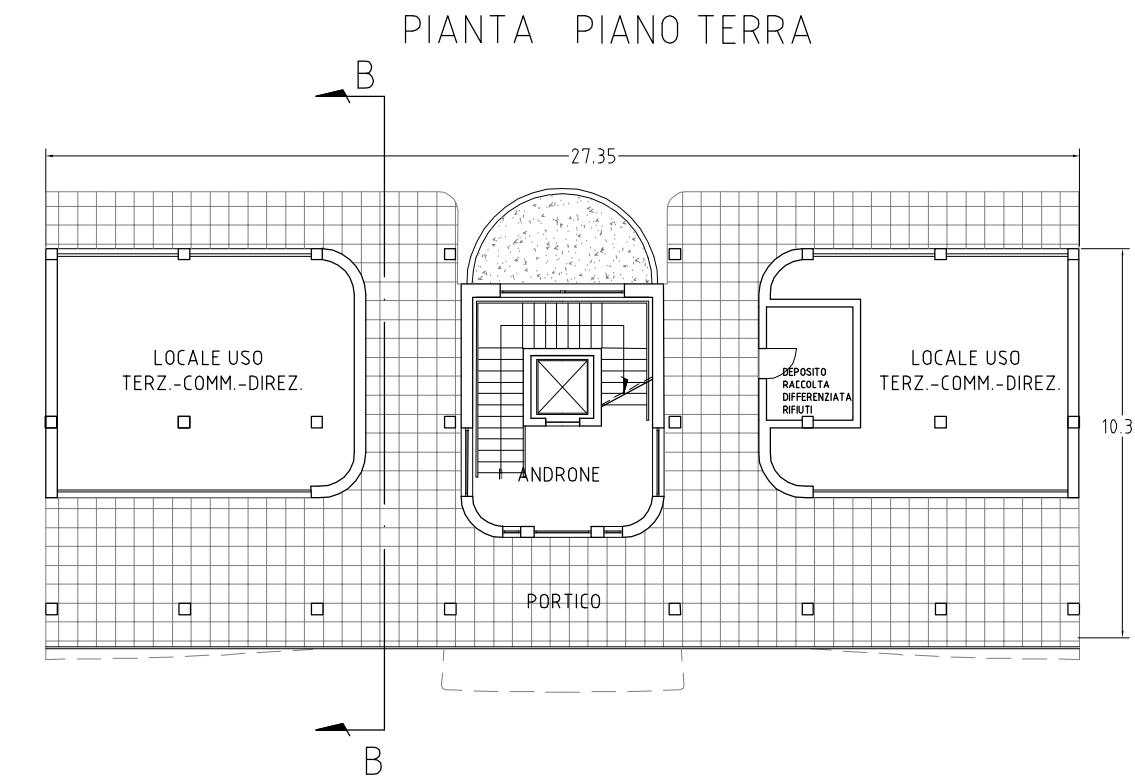


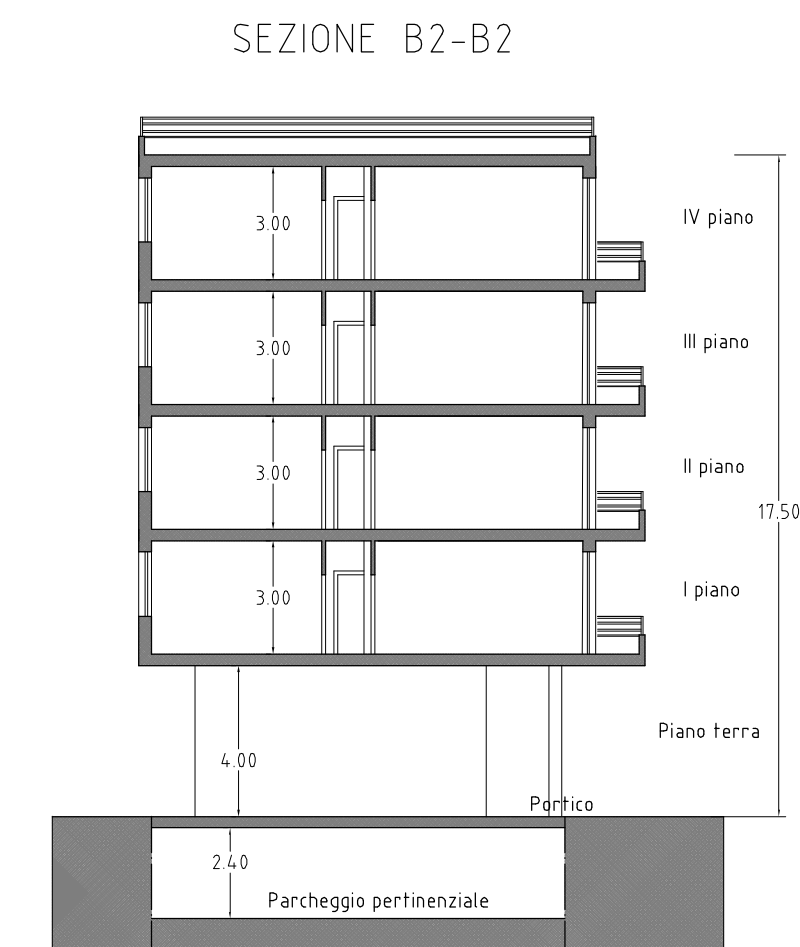
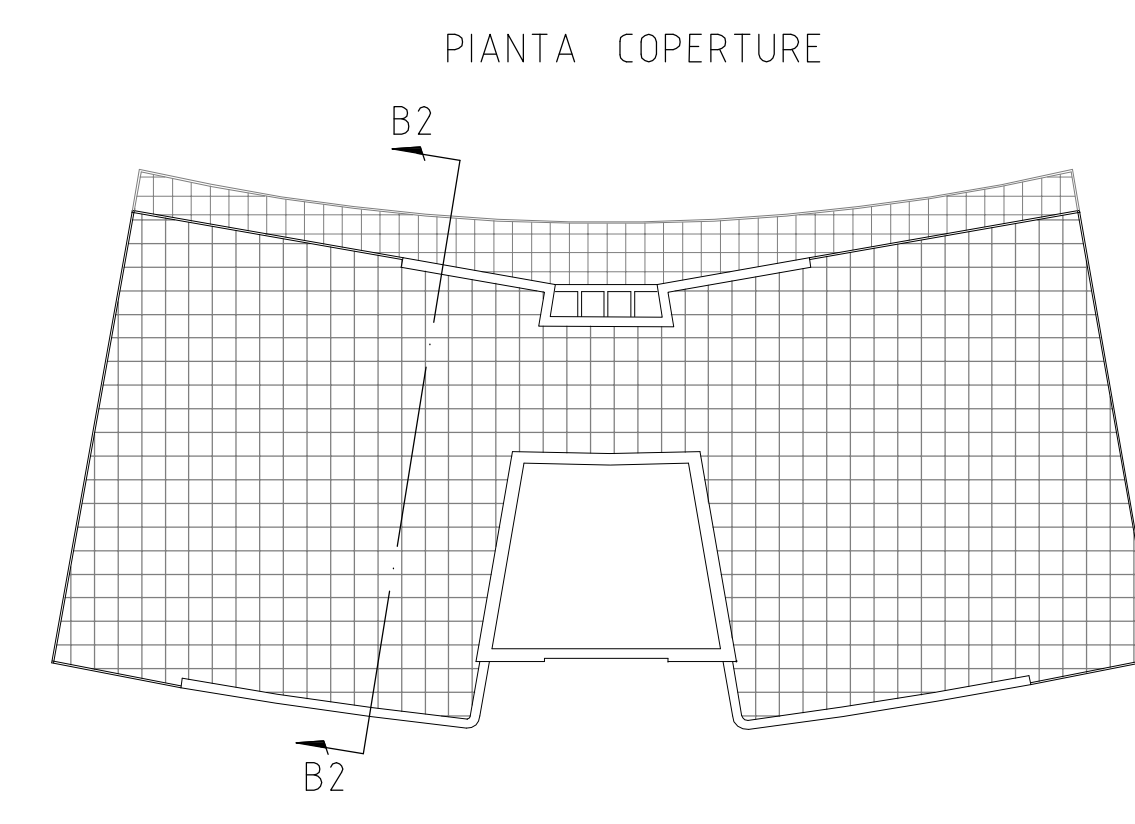
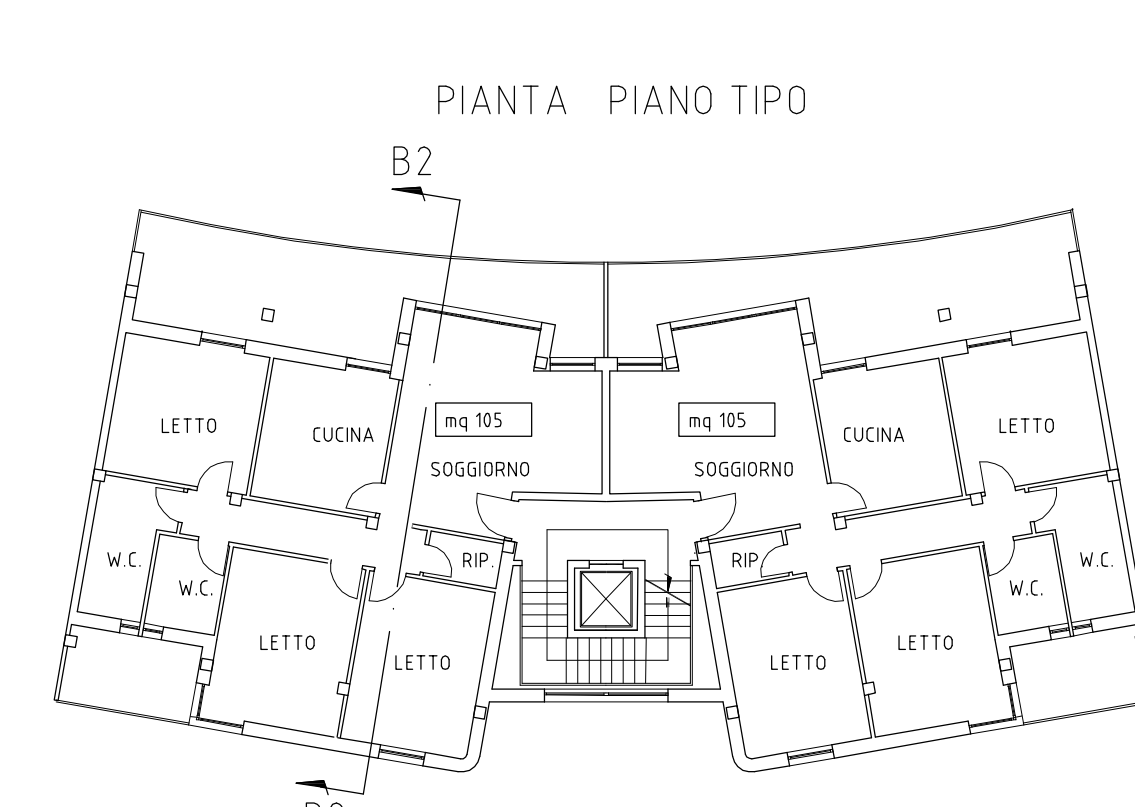
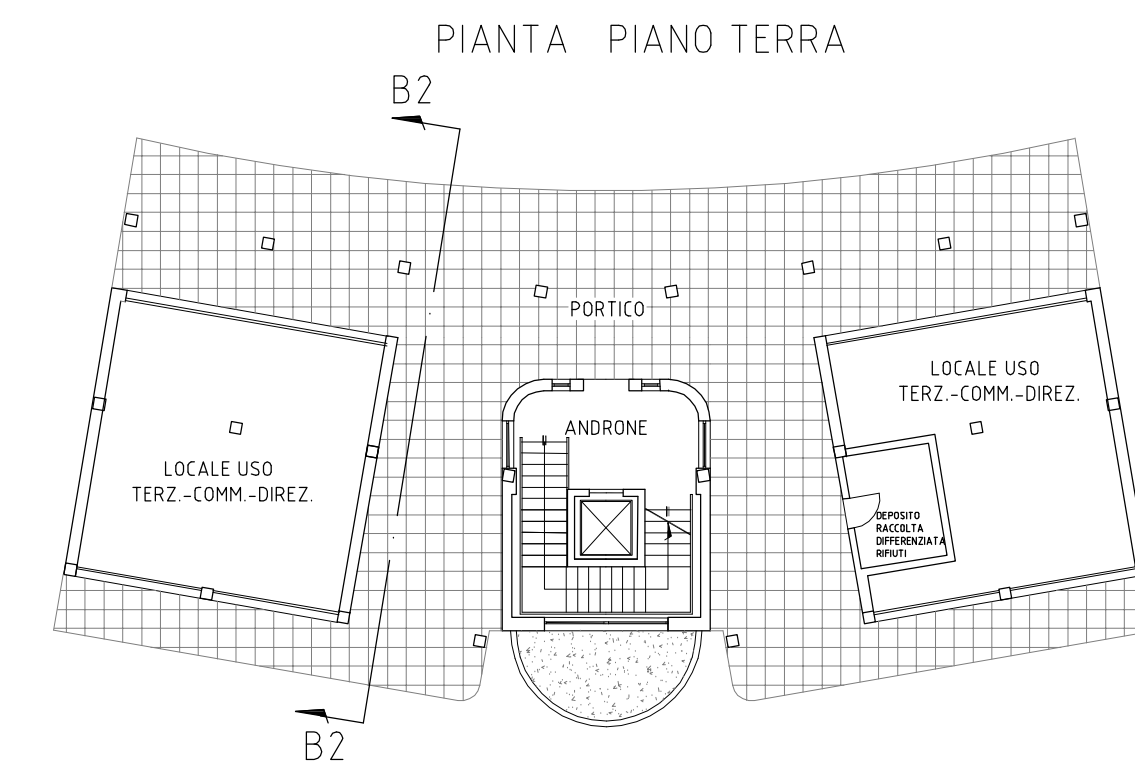
Tipo A	
n. piani	n.3 + P. T.
h. piani res. + PT	m. 14.20
volume lordo	mc 4.474
sis resid.le	mq 999
sis commerciale	mq 258
n./s.u. alloggi	
p. tipo	n. 3 mq 90, mq 70, mq 90
n. totale alloggi	n. 9



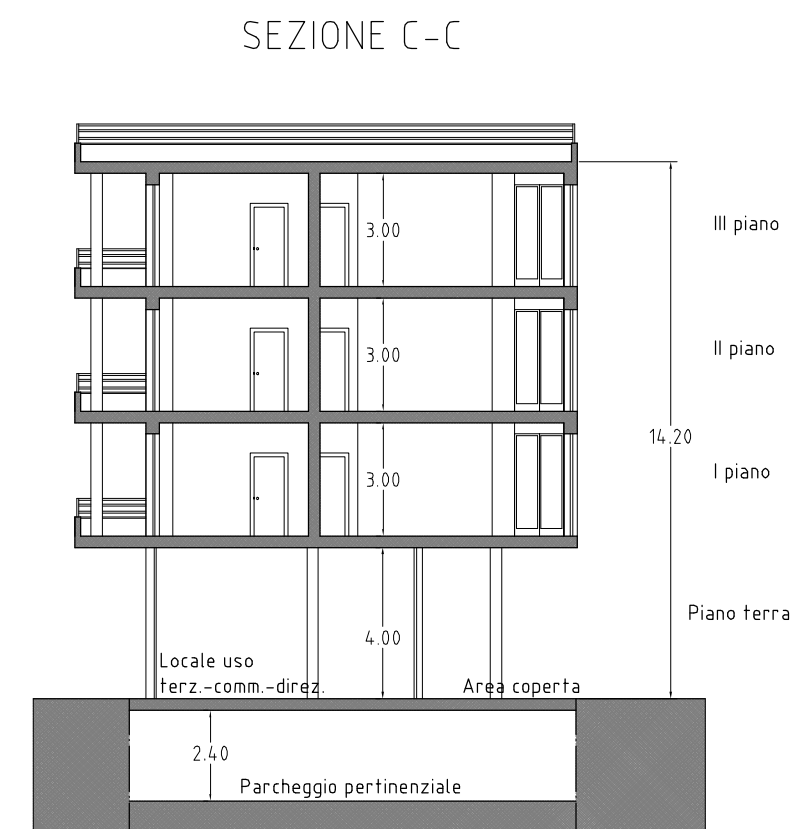
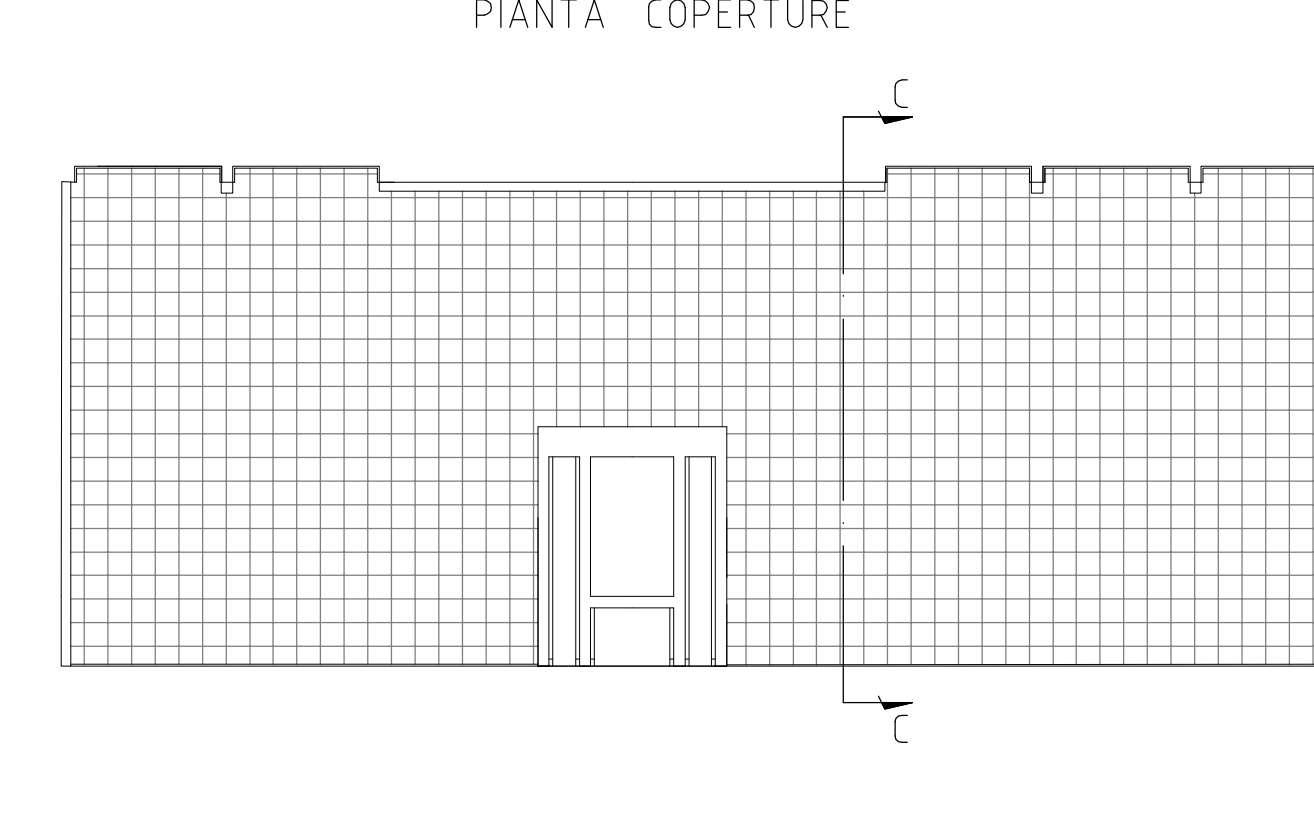
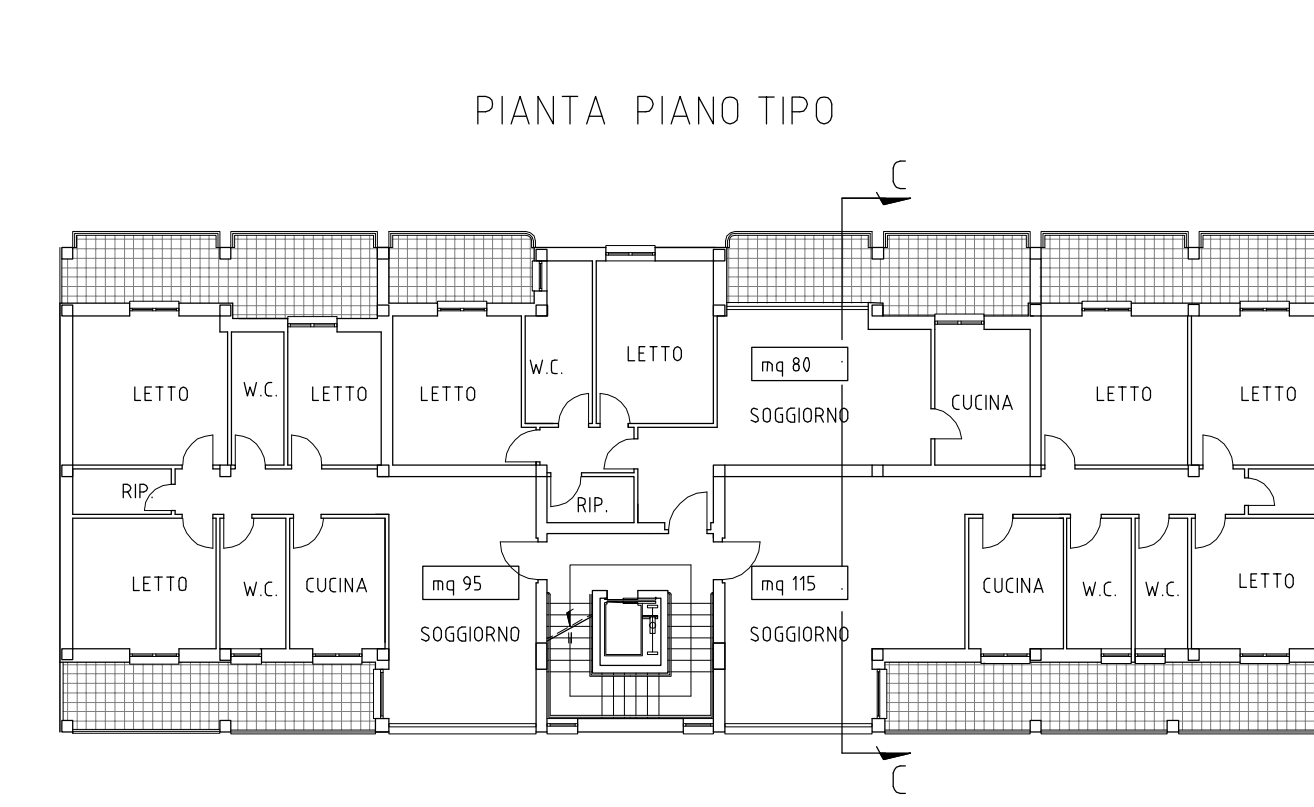
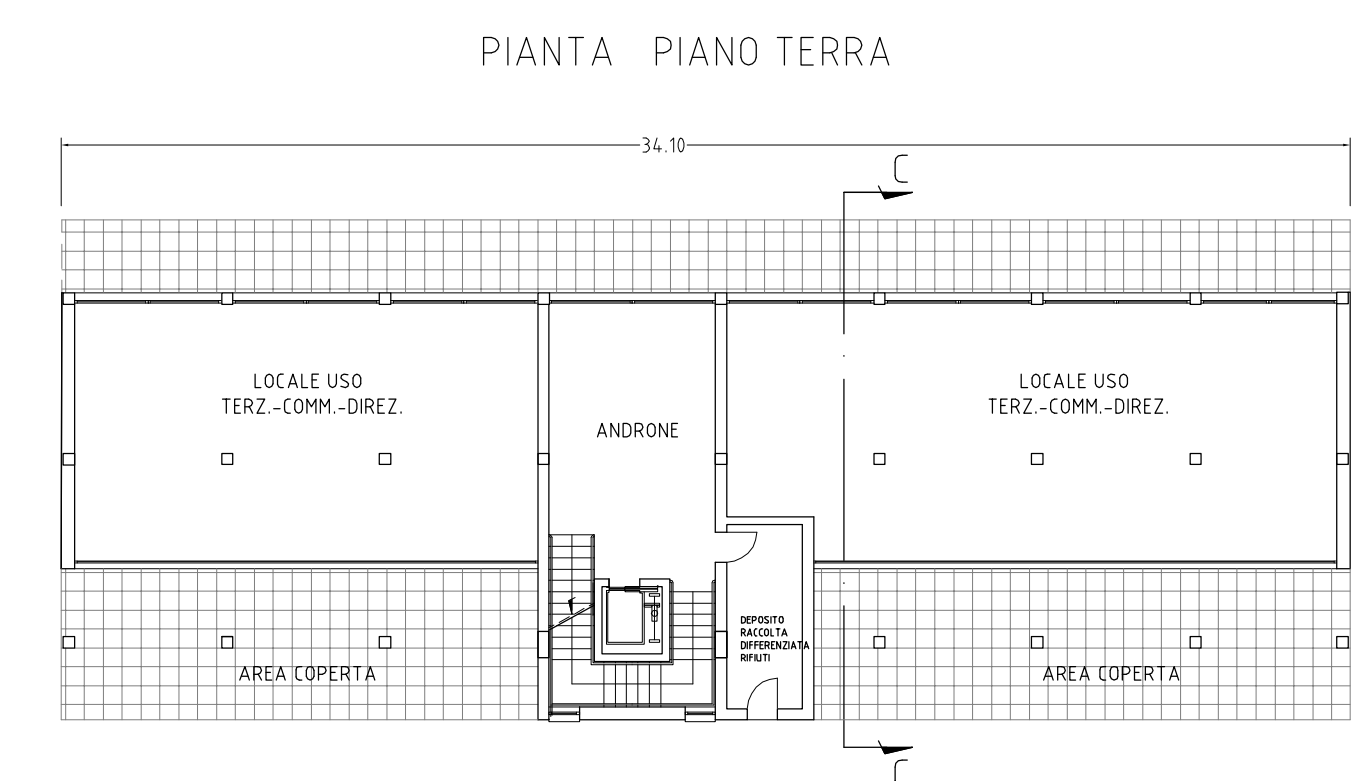
Tipo B = B1	
n. piani	n.3 + P. T. porticato
h. piani res. + PT	m. 14.20
volume lordo	mc 3.362
sis resid.le	mq 962
sis commerciale	mq 101
n./s.u. alloggi	
p. tipo	n. 2 mq 105, mq 105
n. totale alloggi	n. 6



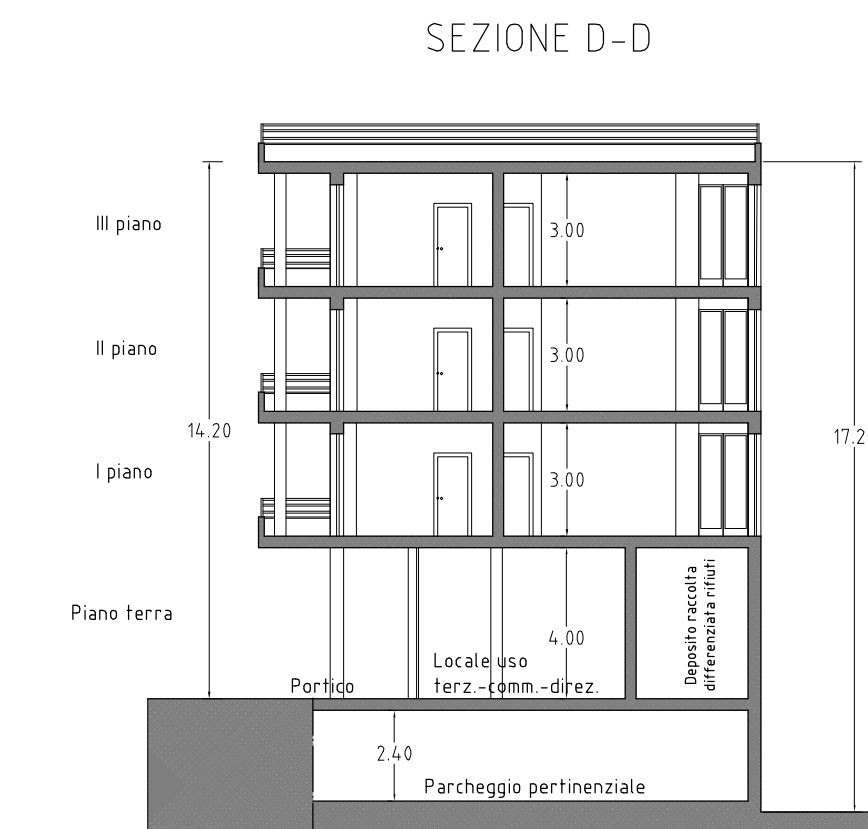
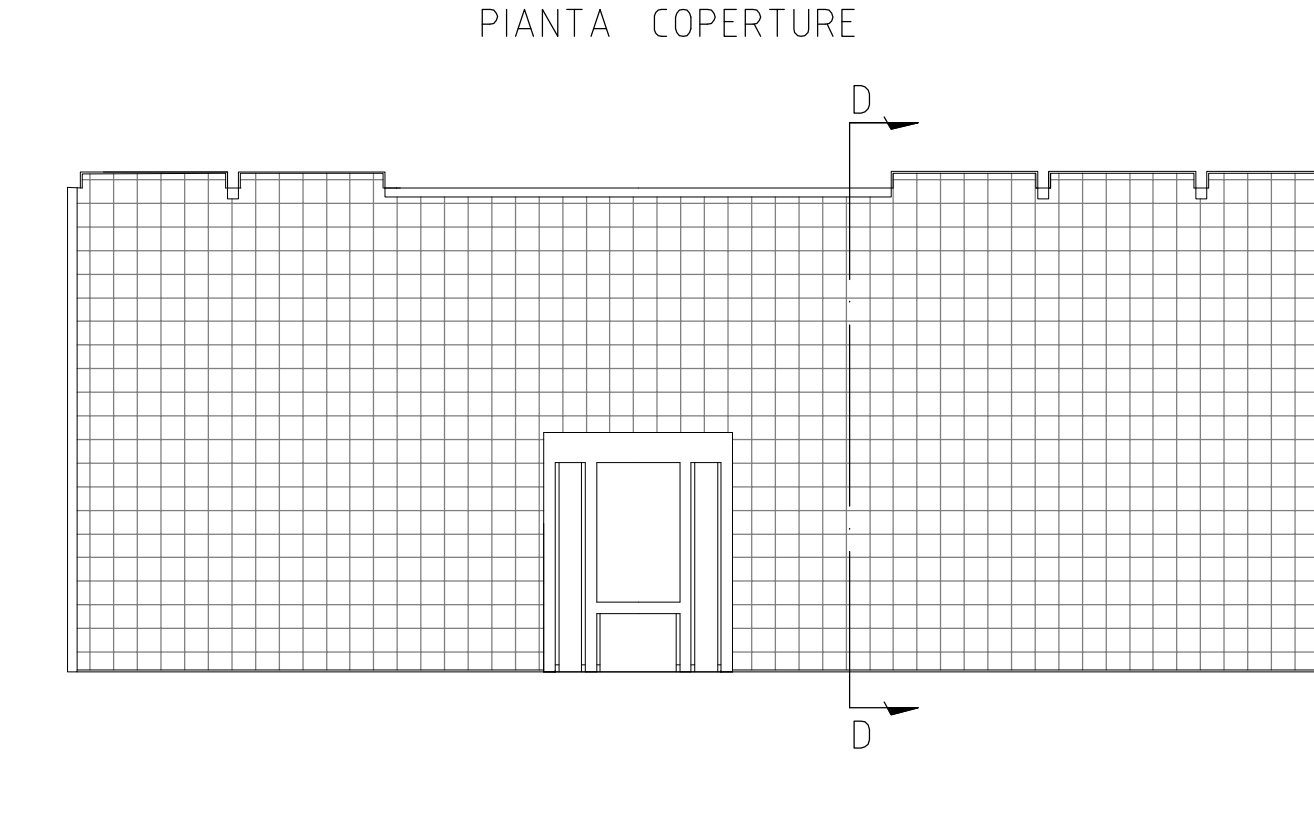
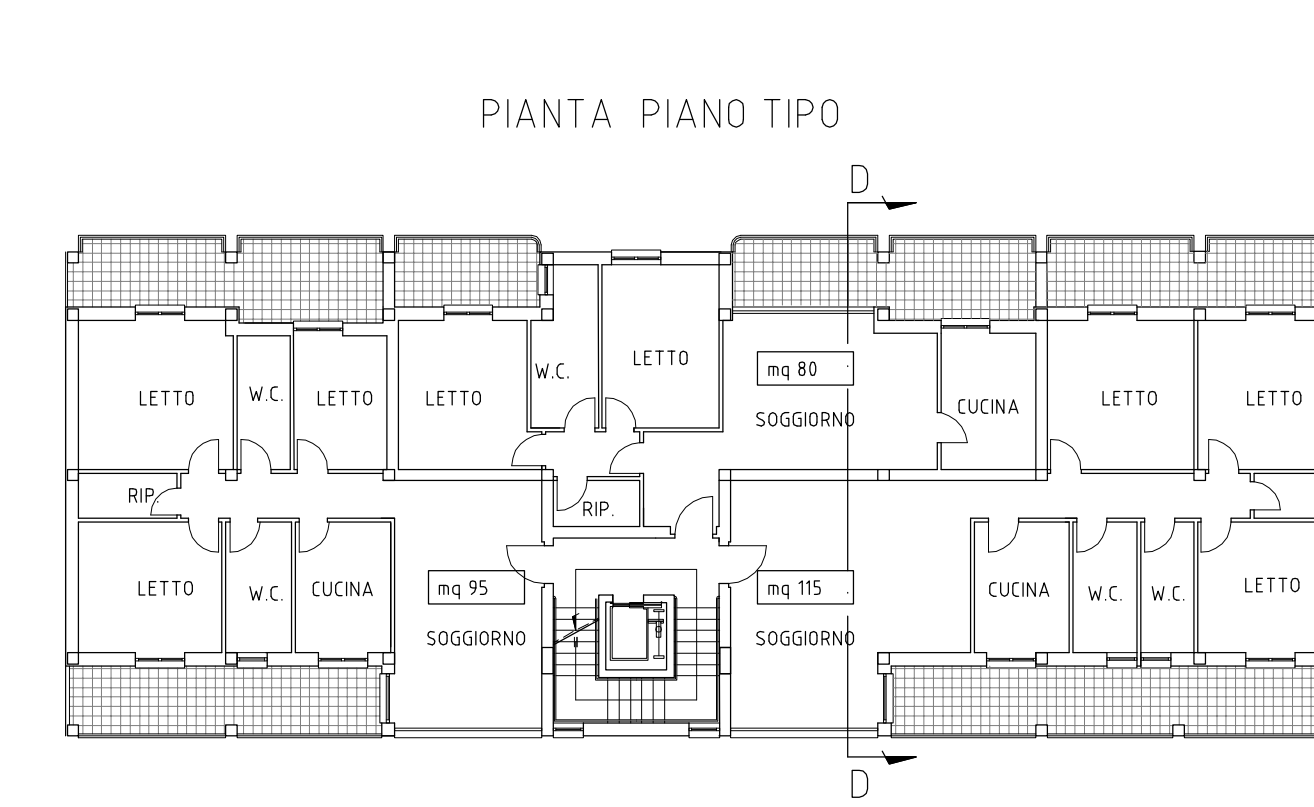
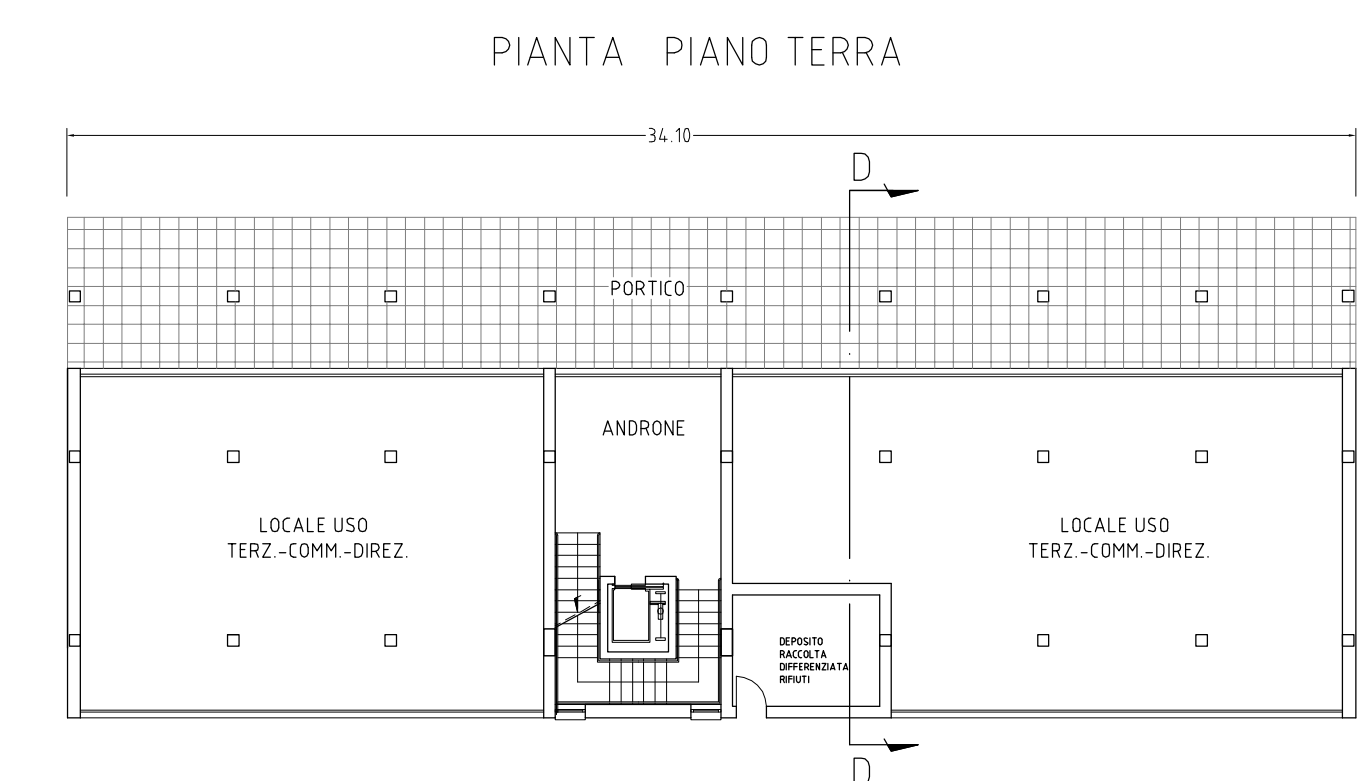
Tipo B2	
n. piani	n.4 + P. T. porticato
h. piani res. + PT	m. 17.50
volume lordo	mc 4.260
sis resid.le	mq 1.134
sis commerciale	mq 101
n./s.u. alloggi	
p. tipo	n. 2 mq 105, mq 105
n. totale alloggi	n. 8



Tipo C	
n. piani	n.3 + P. T. porticato
h. piani res. + PT	m. 14.20
volume lordo	mc 4.717
sis resid.le	mq 1.129
sis commerciale	mq 209
n./s.u. alloggi	
p. tipo	n. 3 mq 80, mq 95, mq 115
n. totale alloggi	n. 9



Tipo D	
n. piani	n.3 + P. T. porticato
h. piani res. + PT	m. 14.20
volume lordo	mc 4.864
sis resid.le	mq 1.211
sis commerciale	mq 254
n./s.u. alloggi	
p. tipo	n. 3 mq 80, mq 95, mq 115
n. totale alloggi	n. 9



EDILIZIA RESIDENZIALE SOCIALE  
IN LOCALITA' MONTICELLI - AT\_ERP3



TAV. 4a TIPI EDILIZI  
Scala 1 : 200

gruppo di lavoro  
COORDINATORE DELLA PROGETTAZIONE  
Arch. Bianca De Roberto

PROGETTAZIONE URBANISTICA  
Arch. Giovanni Ciotta  
Arch. Filomena Darabò

PROGETTAZIONE IMPIANTI  
Ing. Vito Galderisi  
Ing. Nicola Grimaldi  
Ing. Benedetto Troisi

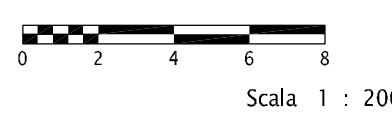
PROCEURE TECNICHE-AMMINISTRATIVE  
Arch. Francesco Savino  
Arch. Marialisa Ferro  
Geom. Vincenzo de Sio

STUDIO GEOLOGICO  
Geol. Rosario Lambiase

STUDIO FONOMETRICO  
Dott. Anna Lisa Spatola  
Arch. Daniela de Martino

COLLABORATORI  
Geom. Marcello Sansone  
Geom. Corrado Marino  
Geom. Gaetana Pinto

IL DIRETTORE DI SETTORE  
Arch. Bianca De Roberto



Scala 1 : 200